

Verification Report

Report No. SCL01J022437

Page 1 of 99

CENTRE TESTING INTERNATIONAL



Applicant GUANGZHOU ZHIYUAN ELECTRONICS CO.,LTD
Address 2 FLOOR,NO.7 BUILDING,HUANGZHOU INDUSTRIAL ESTATE,
 CHEBEI ROAD,TIANHE,GUANGZHOU,GUANGDONG CHINA
Product Name WiFi-CAN Module
Product Part No. CANWiFi-200T

Conclusion

Tested Sample	According to directive	Result
Submitted Sample	RoHS Directive 2011/65/EU with amendment (EU) 2015/863	Pass

Pass means that the results shown on the report comply with the limits set by RoHS Directive 2011/65/EU with amendment(EU) 2015/863.

Tested by

Jerry Guo

Reviewed by

Emna Xiao

Approved by

Hill Zheng

Date

Jul. 13, 2017

Hill Zheng
Technical Manager

No.R177731032

Centre Testing International Group Co., Ltd.

Hongwei Industrial Zone, Bao'an 70 District, Shenzhen, Guangdong, China



Verification Report

Report No. SCL01J022437

Page 2 of 99

Report Content

Sample Information.....	3
Test Requested.....	3
Photo(s) of the Product(s).....	3
Test Method.....	4
Test Result(s)	6
Test Process.....	85
Photo(s) of the Tested Component(s).....	88
RoHS Directive Exemptions.....	94

Verification Report

Report No. SCL01J022437

Page 3 of 99

Sample Received Date Apr. 12, 2017
Testing Period Apr. 12, 2017 to Jul. 13, 2017

Test Requested

1. As specified by client, to screen Lead(Pb), Cadmium(Cd), Mercury(Hg), Chromium(Cr), Bromine(Br), Phthalates (Dibutyl phthalate(DBP), Benzylbutyl phthalate(BBP), Di-2-ethylhexyl phthalate(DEHP), Diisobutyl phthalate(DIBP)) in the submitted sample(s).
2. As specified by client, when screening results exceed the screening limit in IEC 62321-3-1:2013 Ed.1.0 or screening limit of Phthalates in this report, further use of chemical methods are required to test the Lead(Pb), Cadmium(Cd), Mercury(Hg), Hexavalent Chromium(Cr(VI)), Polybrominated Biphenyls(PBBs), Polybrominated Diphenyl Ethers(PBDEs) and Phthalates (Dibutyl phthalate(DBP), Benzylbutyl phthalate(BBP), Di-2-ethylhexyl phthalate(DEHP), Diisobutyl phthalate(DIBP)) in the submitted samples.

Photo(s) of the Product(s)

WiFi-CAN Module



Verification Report

Report No. SCL01J022437

Page 4 of 99

Test Method

A. Screening limits for regulated elements according to IEC 62321-3-1:2013 Ed.1.0(Unit: mg/kg)

Element	Polymers	Metals	Composite material
Pb	$BL \leq (700-3\sigma) < X < (1300+3\sigma)$ $\leq OL$	$BL \leq (700-3\sigma) < X < (1300+3\sigma)$ $\leq OL$	$BL \leq (500-3\sigma) < X < (1500+3\sigma)$ $\leq OL$
Cd	$BL \leq (70-3\sigma) < X < (130+3\sigma)$ $\leq OL$	$BL \leq (70-3\sigma) < X < (130+3\sigma)$ $\leq OL$	$LOD < X < (150+3\sigma) \leq OL$
Hg	$BL \leq (700-3\sigma) < X < (1300+3\sigma)$ $\leq OL$	$BL \leq (700-3\sigma) < X < (1300+3\sigma)$ $\leq OL$	$BL \leq (500-3\sigma) < X < (1500+3\sigma)$ $\leq OL$
Cr	$BL \leq (700-3\sigma) < X$	$BL \leq (700-3\sigma) < X$	$BL \leq (500-3\sigma) < X$
Br	$BL \leq (300-3\sigma) < X$	N/A	$BL \leq (250-3\sigma) < X$

B. Screening limits for Phthalates

Test Item(s)	Screening limits(Unit: mg/kg)
Dibutyl phthalate(DBP)	$BL \leq 600 < X$
Benzylbutyl phthalate(BBP)	$BL \leq 600 < X$
Di-2-ethylhexyl phthalate(DEHP)	$BL \leq 600 < X$
Diisobutyl phthalate(DIBP)	$BL \leq 600 < X$

Verification Report

Report No. SCL01J022437

Page 5 of 99

C. Chemical Test

Tested Item(s)	Test Method	Measured Equipment(s)	MDL	Limit
Lead (Pb)	IEC 62321-5:2013 Ed.1.0	ICP-OES	10 mg/kg	1000 mg/kg
	Refer to IEC 62321-5:2013 Ed.1.0		10 mg/kg	
Cadmium (Cd)	IEC 62321-5:2013 Ed.1.0	ICP-OES	10 mg/kg	100 mg/kg
	Refer to IEC 62321-5:2013 Ed.1.0		10 mg/kg	
Mercury (Hg)	IEC 62321-4:2013 Ed.1.0	ICP-OES	10 mg/kg	1000 mg/kg
	Refer to IEC 62321-4:2013 Ed.1.0		10 mg/kg	
Hexavalent Chromium (Cr(VI))	IEC 62321:2008 Ed.1 Annex C	UV-Vis	10 mg/kg	1000 mg/kg
	IEC 62321-7-1:2015		0.10µg/cm ² (LOQ)	
Polybrominated Biphenyls (PBBs)	IEC 62321-6:2015	GC-MS	100 mg/kg	1000 mg/kg
Polybrominated Diphenyl Ethers (PBDEs)	IEC 62321-6:2015	GC-MS	100 mg/kg	1000 mg/kg
Phthalates (DBP, BBP, DEHP, DIBP)	Refer to IEC 62321-8 CDV	GC-MS	50 mg/kg	1000 mg/kg for each

Remark:

- BL = Under the screening limit
- OL = Above the screening limit
- X = The range of needing to do further testing
- 3σ = The reproducibility of analytical instruments
- N/A= Not applicable
- LOD= Detection limit
- LOQ = Limit of Quantification, The LOQ of Hexavalent chromium is 0.10 µg/cm²

Verification Report

Report No. SCL01J022437

Page 6 of 99

Test Result(s)

Sample No.	Sample Description	Tested Items	XRF Screening Test	Phthalates Screening Test	Chemical Test (mg/kg)	Conclusion	Sample Received/ Resubmitted Date
1	Golden metal	Pb	BL	/	/	PASS	Apr. 12, 2017
		Cd	BL	/	/		
		Hg	BL	/	/		
		Cr(Cr(VI))	BL	/	/		
		Br(PBBs&PBDEs)	N/A	/	/		
		DBP	N/A	/	/		
		BBP	N/A	/	/		
		DEHP	N/A	/	/		
2	Black foam	Pb	BL	/	/	PASS	Apr. 12, 2017
		Cd	BL	/	/		
		Hg	BL	/	/		
		Cr(Cr(VI))	BL	/	/		
		Br(PBBs&PBDEs)	BL	/	/		
		DBP	N/A	BL	/		
		BBP	N/A	BL	/		
		DEHP	N/A	BL	/		
3	Black plastic	Pb	BL	/	/	PASS	Apr. 12, 2017
		Cd	BL	/	/		
		Hg	BL	/	/		
		Cr(Cr(VI))	BL	/	/		
		Br(PBBs&PBDEs)	BL	/	/		
		DBP	N/A	BL	/		
		BBP	N/A	BL	/		
		DEHP	N/A	BL	/		
DIBP	N/A	BL	/				

Verification Report

Report No. SCL01J022437

Page 7 of 99

Sample No.	Sample Description	Tested Items	XRF Screening Test	Phthalates Screening Test	Chemical Test (mg/kg)	Conclusion	Sample Received/ Resubmitted Date
4	Semi-transparent glue	Pb	BL	/	/	PASS	Apr. 12, 2017
		Cd	BL	/	/		
		Hg	BL	/	/		
		Cr(Cr(VI))	BL	/	/		
		Br(PBBs&PBDEs)	BL	/	/		
		DBP	N/A	BL	/		
		BBP	N/A	BL	/		
		DEHP	N/A	BL	/		
		DIBP	N/A	BL	/		
5	Black plastic	Pb	BL	/	/	PASS	Apr. 12, 2017
		Cd	BL	/	/		
		Hg	BL	/	/		
		Cr(Cr(VI))	BL	/	/		
		Br(PBBs&PBDEs)	BL	/	/		
		DBP	N/A	BL	/		
		BBP	N/A	BL	/		
		DEHP	N/A	BL	/		
		DIBP	N/A	BL	/		
6	Golden metal	Pb	BL	/	/	PASS	Apr. 12, 2017
		Cd	BL	/	/		
		Hg	BL	/	/		
		Cr(Cr(VI))	BL	/	/		
		Br(PBBs&PBDEs)	N/A	/	/		
		DBP	N/A	/	/		
		BBP	N/A	/	/		
		DEHP	N/A	/	/		
		DIBP	N/A	/	/		

Verification Report

Report No. SCL01J022437

Page 8 of 99

Sample No.	Sample Description	Tested Items	XRF Screening Test	Phthalates Screening Test	Chemical Test (mg/kg)	Conclusion	Sample Received/ Resubmitted Date
7	Semi-transparent plastic	Pb	BL	/	/	PASS	Apr. 12, 2017
		Cd	BL	/	/		
		Hg	BL	/	/		
		Cr(Cr(VI))	BL	/	/		
		Br(PBBs&PBDEs)	BL	/	/		
		DBP	N/A	BL	/		
		BBP	N/A	BL	/		
		DEHP	N/A	BL	/		
		DIBP	N/A	BL	/		
8	Light green silicone rubber	Pb	BL	/	/	PASS	Apr. 12, 2017
		Cd	BL	/	/		
		Hg	BL	/	/		
		Cr(Cr(VI))	BL	/	/		
		Br(PBBs&PBDEs)	BL	/	/		
		DBP	N/A	BL	/		
		BBP	N/A	BL	/		
		DEHP	N/A	BL	/		
		DIBP	N/A	BL	/		
9	Black plastic	Pb	BL	/	/	PASS	Apr. 12, 2017
		Cd	BL	/	/		
		Hg	BL	/	/		
		Cr(Cr(VI))	BL	/	/		
		Br(PBBs&PBDEs)	BL	/	/		
		DBP	N/A	BL	/		
		BBP	N/A	BL	/		
		DEHP	N/A	BL	/		
		DIBP	N/A	BL	/		

Verification Report

Report No. SCL01J022437

Page 9 of 99

Sample No.	Sample Description	Tested Items	XRF Screening Test	Phthalates Screening Test	Chemical Test (mg/kg)	Conclusion	Sample Received/ Resubmitted Date
10	Black plastic	Pb	BL	/	/	PASS	Apr. 12, 2017
		Cd	BL	/	/		
		Hg	BL	/	/		
		Cr(Cr(VI))	BL	/	/		
		Br(PBBs&PBDEs)	BL	/	/		
		DBP	N/A	BL	/		
		BBP	N/A	BL	/		
		DEHP	N/A	BL	/		
		DIBP	N/A	BL	/		
11	Black coating	Pb	BL	/	/	PASS	Apr. 12, 2017
		Cd	BL	/	/		
		Hg	BL	/	/		
		Cr(Cr(VI))	BL	/	/		
		Br(PBBs&PBDEs)	BL	/	/		
		DBP	N/A	BL	/		
		BBP	N/A	BL	/		
		DEHP	N/A	BL	/		
		DIBP	N/A	BL	/		
12	Metal base	Pb	OL	/	31380 ^{#1}	PASS	Apr. 12, 2017
		Cd	BL	/	/		
		Hg	BL	/	/		
		Cr(Cr(VI))	BL	/	/		
		Br(PBBs&PBDEs)	N/A	/	/		
		DBP	N/A	/	/		
		BBP	N/A	/	/		
		DEHP	N/A	/	/		
		DIBP	N/A	/	/		

Verification Report

Report No. SCL01J022437

Page 10 of 99

Sample No.	Sample Description	Tested Items	XRF Screening Test	Phthalates Screening Test	Chemical Test (mg/kg)	Conclusion	Sample Received/ Resubmitted Date
13	Silvery metal	Pb	BL	/	/	PASS	Apr. 12, 2017
		Cd	BL	/	/		
		Hg	BL	/	/		
		Cr(Cr(VI))	BL	/	/		
		Br(PBBs&PBDEs)	N/A	/	/		
		DBP	N/A	/	/		
		BBP	N/A	/	/		
		DEHP	N/A	/	/		
14	Metal with silvery plating	Pb	OL	/	24730 #2	PASS	Apr. 12, 2017
		Cd	BL	/	/		
		Hg	BL	/	/		
		Cr(Cr(VI))	N/A	/	N.D. ▼		
		Br(PBBs&PBDEs)	N/A	/	/		
		DBP	N/A	/	/		
		BBP	N/A	/	/		
		DEHP	N/A	/	/		
15	White plastic	Pb	BL	/	/	PASS	Apr. 12, 2017
		Cd	BL	/	/		
		Hg	BL	/	/		
		Cr(Cr(VI))	BL	/	/		
		Br(PBBs&PBDEs)	BL	/	/		
		DBP	N/A	BL	/		
		BBP	N/A	BL	/		
		DEHP	N/A	BL	/		
DIBP	N/A	BL	/				

Verification Report

Report No. SCL01J022437

Page 11 of 99

Sample No.	Sample Description	Tested Items	XRF Screening Test	Phthalates Screening Test	Chemical Test (mg/kg)	Conclusion	Sample Received/ Resubmitted Date
16	Metal with golden plating	Pb	OL	/	20260 ^{#2}	PASS	Apr. 12, 2017
		Cd	BL	/	/		
		Hg	BL	/	/		
		Cr(Cr(VI))	BL	/	/		
		Br(PBBs&PBDEs)	N/A	/	/		
		DBP	N/A	/	/		
		BBP	N/A	/	/		
		DEHP	N/A	/	/		
17	White plastic	Pb	BL	/	/	PASS	Apr. 12, 2017
		Cd	BL	/	/		
		Hg	BL	/	/		
		Cr(Cr(VI))	BL	/	/		
		Br(PBBs&PBDEs)	BL	/	/		
		DBP	N/A	BL	/		
		BBP	N/A	BL	/		
		DEHP	N/A	BL	/		
18	Silvery metal wire	Pb	BL	/	/	PASS	Apr. 12, 2017
		Cd	BL	/	/		
		Hg	BL	/	/		
		Cr(Cr(VI))	BL	/	/		
		Br(PBBs&PBDEs)	N/A	/	/		
		DBP	N/A	/	/		
		BBP	N/A	/	/		
		DEHP	N/A	/	/		
DIBP	N/A	/	/				

Verification Report

Report No. SCL01J022437

Page 12 of 99

Sample No.	Sample Description	Tested Items	XRF Screening Test	Phthalates Screening Test	Chemical Test (mg/kg)	Conclusion	Sample Received/ Resubmitted Date
19	Light brown plastic	Pb	BL	/	/	PASS	Apr. 12, 2017
		Cd	BL	/	/		
		Hg	BL	/	/		
		Cr(Cr(VI))	BL	/	/		
		Br(PBBs&PBDEs)	BL	/	/		
		DBP	N/A	BL	/		
		BBP	N/A	BL	/		
		DEHP	N/A	BL	/		
		DIBP	N/A	BL	/		
20	Silvery metal net	Pb	BL	/	/	PASS	Apr. 12, 2017
		Cd	BL	/	/		
		Hg	BL	/	/		
		Cr(Cr(VI))	BL	/	/		
		Br(PBBs&PBDEs)	N/A	/	/		
		DBP	N/A	/	/		
		BBP	N/A	/	/		
		DEHP	N/A	/	/		
		DIBP	N/A	/	/		
21	Golden metal	Pb	OL	/	26065 ^{#1}	PASS	Apr. 12, 2017
		Cd	BL	/	/		
		Hg	BL	/	/		
		Cr(Cr(VI))	BL	/	/		
		Br(PBBs&PBDEs)	N/A	/	/		
		DBP	N/A	/	/		
		BBP	N/A	/	/		
		DEHP	N/A	/	/		
		DIBP	N/A	/	/		

Verification Report

Report No. SCL01J022437

Page 13 of 99

Sample No.	Sample Description	Tested Items	XRF Screening Test	Phthalates Screening Test	Chemical Test (mg/kg)	Conclusion	Sample Received/ Resubmitted Date
22	Silvery metal	Pb	BL	/	/	PASS	Apr. 12, 2017
		Cd	BL	/	/		
		Hg	BL	/	/		
		Cr(Cr(VI))	BL	/	/		
		Br(PBBs&PBDEs)	N/A	/	/		
		DBP	N/A	/	/		
		BBP	N/A	/	/		
		DEHP	N/A	/	/		
23	Silver-gray metal	Pb	BL	/	/	PASS	Apr. 12, 2017
		Cd	BL	/	/		
		Hg	BL	/	/		
		Cr(Cr(VI))	BL	/	/		
		Br(PBBs&PBDEs)	N/A	/	/		
		DBP	N/A	/	/		
		BBP	N/A	/	/		
		DEHP	N/A	/	/		
24	Silver-gray metal	Pb	BL	/	/	PASS	Apr. 12, 2017
		Cd	BL	/	/		
		Hg	BL	/	/		
		Cr(Cr(VI))	BL	/	/		
		Br(PBBs&PBDEs)	N/A	/	/		
		DBP	N/A	/	/		
		BBP	N/A	/	/		
		DEHP	N/A	/	/		
DIBP	N/A	/	/				

Verification Report

Report No. SCL01J022437

Page 14 of 99

Sample No.	Sample Description	Tested Items	XRF Screening Test	Phthalates Screening Test	Chemical Test (mg/kg)	Conclusion	Sample Received/ Resubmitted Date
25	Black plastic	Pb	BL	/	/	PASS	Apr. 12, 2017
		Cd	BL	/	/		
		Hg	BL	/	/		
		Cr(Cr(VI))	BL	/	/		
		Br(PBBs&PBDEs)	BL	/	/		
		DBP	N/A	BL	/		
		BBP	N/A	BL	/		
		DEHP	N/A	BL	/		
		DIBP	N/A	BL	/		
26	Black coating	Pb	BL	/	/	PASS	Apr. 12, 2017
		Cd	BL	/	/		
		Hg	BL	/	/		
		Cr(Cr(VI))	BL	/	/		
		Br(PBBs&PBDEs)	BL	/	/		
		DBP	N/A	BL	/		
		BBP	N/A	BL	/		
		DEHP	N/A	BL	/		
		DIBP	N/A	BL	/		
27	Metal base	Pb	BL	/	/	PASS	Apr. 12, 2017
		Cd	BL	/	/		
		Hg	BL	/	/		
		Cr(Cr(VI))	BL	/	/		
		Br(PBBs&PBDEs)	N/A	/	/		
		DBP	N/A	/	/		
		BBP	N/A	/	/		
		DEHP	N/A	/	/		
		DIBP	N/A	/	/		

Verification Report

Report No. SCL01J022437

Page 15 of 99

Sample No.	Sample Description	Tested Items	XRF Screening Test	Phthalates Screening Test	Chemical Test (mg/kg)	Conclusion	Sample Received/ Resubmitted Date
28	Metal base	Pb	BL	/	/	PASS	Apr. 12, 2017
		Cd	BL	/	/		
		Hg	BL	/	/		
		Cr(Cr(VI))	IN	/	N.D. ▼		
		Br(PBBs&PBDEs)	N/A	/	/		
		DBP	N/A	/	/		
		BBP	N/A	/	/		
		DEHP	N/A	/	/		
		DIBP	N/A	/	/		
29	Metal base	Pb	BL	/	/	PASS	Apr. 12, 2017
		Cd	BL	/	/		
		Hg	BL	/	/		
		Cr(Cr(VI))	BL	/	/		
		Br(PBBs&PBDEs)	N/A	/	/		
		DBP	N/A	/	/		
		BBP	N/A	/	/		
		DEHP	N/A	/	/		
		DIBP	N/A	/	/		
30	White label with black printing	Pb	BL	/	/	PASS	Apr. 12, 2017
		Cd	BL	/	/		
		Hg	BL	/	/		
		Cr(Cr(VI))	BL	/	/		
		Br(PBBs&PBDEs)	BL	/	/		
		DBP	N/A	BL	/		
		BBP	N/A	BL	/		
		DEHP	N/A	BL	/		
		DIBP	N/A	BL	/		

Verification Report

Report No. SCL01J022437

Page 16 of 99

Sample No.	Sample Description	Tested Items	XRF Screening Test	Phthalates Screening Test	Chemical Test (mg/kg)	Conclusion	Sample Received/ Resubmitted Date
31	Coloured coating with adhesive paste	Pb	BL	/	/	PASS	Apr. 12, 2017
		Cd	BL	/	/		
		Hg	BL	/	/		
		Cr(Cr(VI))	BL	/	/		
		Br(PBBs&PBDEs)	BL	/	/		
		DBP	N/A	BL	/		
		BBP	N/A	BL	/		
		DEHP	N/A	BL	/		
		DIBP	N/A	BL	/		
32	Transparent plastic	Pb	BL	/	/	PASS	Apr. 12, 2017
		Cd	BL	/	/		
		Hg	BL	/	/		
		Cr(Cr(VI))	BL	/	/		
		Br(PBBs&PBDEs)	BL	/	/		
		DBP	N/A	BL	/		
		BBP	N/A	BL	/		
		DEHP	N/A	BL	/		
		DIBP	N/A	BL	/		
33	Green plastic	Pb	BL	/	/	PASS	Apr. 12, 2017
		Cd	BL	/	/		
		Hg	BL	/	/		
		Cr(Cr(VI))	BL	/	/		
		Br(PBBs&PBDEs)	BL	/	/		
		DBP	N/A	BL	/		
		BBP	N/A	BL	/		
		DEHP	N/A	BL	/		
		DIBP	N/A	BL	/		

Verification Report

Report No. SCL01J022437

Page 17 of 99

Sample No.	Sample Description	Tested Items	XRF Screening Test	Phthalates Screening Test	Chemical Test (mg/kg)	Conclusion	Sample Received/ Resubmitted Date
34	Silvery metal	Pb	BL	/	/	PASS	Apr. 12, 2017
		Cd	BL	/	/		
		Hg	BL	/	/		
		Cr(Cr(VI))	BL	/	/		
		Br(PBBs&PBDEs)	N/A	/	/		
		DBP	N/A	/	/		
		BBP	N/A	/	/		
		DEHP	N/A	/	/		
		DIBP	N/A	/	/		
35	Silvery plating	Pb	OL	/	N.D.	PASS	Apr. 12, 2017
		Cd	BL	/	/		
		Hg	BL	/	/		
		Cr(Cr(VI))	BL	/	/		
		Br(PBBs&PBDEs)	N/A	/	/		
		DBP	N/A	/	/		
		BBP	N/A	/	/		
		DEHP	N/A	/	/		
		DIBP	N/A	/	/		
36	Metal base	Pb	OL	/	27080 ^{#1}	PASS	Apr. 12, 2017
		Cd	BL	/	/		
		Hg	BL	/	/		
		Cr(Cr(VI))	BL	/	/		
		Br(PBBs&PBDEs)	N/A	/	/		
		DBP	N/A	/	/		
		BBP	N/A	/	/		
		DEHP	N/A	/	/		
		DIBP	N/A	/	/		

Verification Report

Report No. SCL01J022437

Page 18 of 99

Sample No.	Sample Description	Tested Items	XRF Screening Test	Phthalates Screening Test	Chemical Test (mg/kg)	Conclusion	Sample Received/ Resubmitted Date
37	Metal with silver-blue plating	Pb	BL	/	/	PASS	Apr. 12, 2017
		Cd	BL	/	/		
		Hg	BL	/	/		
		Cr(Cr(VI))	N/A	/	N.D. ▼		
		Br(PBBs&PBDEs)	N/A	/	/		
		DBP	N/A	/	/		
		BBP	N/A	/	/		
		DEHP	N/A	/	/		
38	Silvery metal	Pb	BL	/	/	PASS	Apr. 12, 2017
		Cd	BL	/	/		
		Hg	BL	/	/		
		Cr(Cr(VI))	BL	/	/		
		Br(PBBs&PBDEs)	N/A	/	/		
		DBP	N/A	/	/		
		BBP	N/A	/	/		
		DEHP	N/A	/	/		
39	Black plating	Pb	IN	/	N.D.	PASS	Apr. 12, 2017
		Cd	BL	/	/		
		Hg	BL	/	/		
		Cr(Cr(VI))	N/A	/	N.D. ▼		
		Br(PBBs&PBDEs)	N/A	/	/		
		DBP	N/A	/	/		
		BBP	N/A	/	/		
		DEHP	N/A	/	/		
DIBP	N/A	/	/				

Verification Report

Report No. SCL01J022437

Page 19 of 99

Sample No.	Sample Description	Tested Items	XRF Screening Test	Phthalates Screening Test	Chemical Test (mg/kg)	Conclusion	Sample Received/ Resubmitted Date
40	Metal base	Pb	IN	/	N.D.	PASS	Apr. 12, 2017
		Cd	BL	/	/		
		Hg	BL	/	/		
		Cr(Cr(VI))	BL	/	/		
		Br(PBBs&PBDEs)	N/A	/	/		
		DBP	N/A	/	/		
		BBP	N/A	/	/		
		DEHP	N/A	/	/		
		DIBP	N/A	/	/		
41	Golden metal	Pb	OL	/	32820 ^{#1}	PASS	Apr. 12, 2017
		Cd	BL	/	/		
		Hg	BL	/	/		
		Cr(Cr(VI))	BL	/	/		
		Br(PBBs&PBDEs)	N/A	/	/		
		DBP	N/A	/	/		
		BBP	N/A	/	/		
		DEHP	N/A	/	/		
		DIBP	N/A	/	/		
42	PCB (Tested as a whole)	Pb	BL	/	/	PASS	Apr. 12, 2017
		Cd	BL	/	/		
		Hg	BL	/	/		
		Cr(Cr(VI))	BL	/	/		
		Br(PBBs&PBDEs)	IN	/	N.D.		
		DBP	N/A	BL	/		
		BBP	N/A	BL	/		
		DEHP	N/A	BL	/		
		DIBP	N/A	BL	/		

Verification Report

Report No. SCL01J022437

Page 20 of 99

Sample No.	Sample Description	Tested Items	XRF Screening Test	Phthalates Screening Test	Chemical Test (mg/kg)	Conclusion	Sample Received/ Resubmitted Date
43	Silvery metal	Pb	BL	/	/	PASS	Apr. 12, 2017
		Cd	BL	/	/		
		Hg	BL	/	/		
		Cr(Cr(VI))	BL	/	/		
		Br(PBBs&PBDEs)	N/A	/	/		
		DBP	N/A	/	/		
		BBP	N/A	/	/		
		DEHP	N/A	/	/		
		DIBP	N/A	/	/		
44	Black plastic	Pb	BL	/	/	PASS	Apr. 12, 2017
		Cd	BL	/	/		
		Hg	BL	/	/		
		Cr(Cr(VI))	BL	/	/		
		Br(PBBs&PBDEs)	IN	/	N.D.		
		DBP	N/A	BL	/		
		BBP	N/A	BL	/		
		DEHP	N/A	BL	/		
		DIBP	N/A	BL	/		
45	Golden metal	Pb	BL	/	/	PASS	Apr. 12, 2017
		Cd	BL	/	/		
		Hg	BL	/	/		
		Cr(Cr(VI))	BL	/	/		
		Br(PBBs&PBDEs)	N/A	/	/		
		DBP	N/A	/	/		
		BBP	N/A	/	/		
		DEHP	N/A	/	/		
		DIBP	N/A	/	/		

Verification Report

Report No. SCL01J022437

Page 21 of 99

Sample No.	Sample Description	Tested Items	XRF Screening Test	Phthalates Screening Test	Chemical Test (mg/kg)	Conclusion	Sample Received/ Resubmitted Date
46	Black body (Tested as a whole)	Pb	BL	/	/	PASS	Apr. 12, 2017
		Cd	BL	/	/		
		Hg	BL	/	/		
		Cr(Cr(VI))	BL	/	/		
		Br(PBBs&PBDEs)	BL	/	/		
		DBP	N/A	BL	/		
		BBP	N/A	BL	/		
		DEHP	N/A	BL	/		
		DIBP	N/A	BL	/		
47	Silvery metal	Pb	BL	/	/	PASS	Apr. 12, 2017
		Cd	BL	/	/		
		Hg	BL	/	/		
		Cr(Cr(VI))	BL	/	/		
		Br(PBBs&PBDEs)	N/A	/	/		
		DBP	N/A	/	/		
		BBP	N/A	/	/		
		DEHP	N/A	/	/		
		DIBP	N/A	/	/		
48	IC (Tested as a whole)	Pb	BL	/	/	PASS	Apr. 12, 2017
		Cd	BL	/	/		
		Hg	BL	/	/		
		Cr(Cr(VI))	BL	/	/		
		Br(PBBs&PBDEs)	BL	/	/		
		DBP	N/A	BL	/		
		BBP	N/A	BL	/		
		DEHP	N/A	BL	/		
		DIBP	N/A	BL	/		

Verification Report

Report No. SCL01J022437

Page 22 of 99

Sample No.	Sample Description	Tested Items	XRF Screening Test	Phthalates Screening Test	Chemical Test (mg/kg)	Conclusion	Sample Received/ Resubmitted Date
49	Light brown capacitance (Tested as a whole)	Pb	BL	/	/	PASS	Apr. 12, 2017
		Cd	BL	/	/		
		Hg	BL	/	/		
		Cr(Cr(VI))	BL	/	/		
		Br(PBBs&PBDEs)	BL	/	/		
		DBP	N/A	BL	/		
		BBP	N/A	BL	/		
		DEHP	N/A	BL	/		
50	Brown-gray capacitance (Tested as a whole)	Pb	BL	/	/	PASS	Apr. 12, 2017
		Cd	BL	/	/		
		Hg	BL	/	/		
		Cr(Cr(VI))	BL	/	/		
		Br(PBBs&PBDEs)	BL	/	/		
		DBP	N/A	BL	/		
		BBP	N/A	BL	/		
		DEHP	N/A	BL	/		
51	Gray-black inductance (Tested as a whole)	Pb	BL	/	/	PASS	Apr. 12, 2017
		Cd	BL	/	/		
		Hg	BL	/	/		
		Cr(Cr(VI))	BL	/	/		
		Br(PBBs&PBDEs)	BL	/	/		
		DBP	N/A	BL	/		
		BBP	N/A	BL	/		
		DEHP	N/A	BL	/		
DIBP	N/A	BL	/				

Verification Report

Report No. SCL01J022437

Page 23 of 99

Sample No.	Sample Description	Tested Items	XRF Screening Test	Phthalates Screening Test	Chemical Test (mg/kg)	Conclusion	Sample Received/ Resubmitted Date
52	Light brown capacitance (Tested as a whole)	Pb	BL	/	/	PASS	Apr. 12, 2017
		Cd	BL	/	/		
		Hg	BL	/	/		
		Cr(Cr(VI))	BL	/	/		
		Br(PBBs&PBDEs)	BL	/	/		
		DBP	N/A	BL	/		
		BBP	N/A	BL	/		
		DEHP	N/A	BL	/		
53	Black resistance (Tested as a whole)	Pb	BL	/	/	PASS	Apr. 12, 2017
		Cd	BL	/	/		
		Hg	BL	/	/		
		Cr(Cr(VI))	IN	/	N.D.		
		Br(PBBs&PBDEs)	BL	/	/		
		DBP	N/A	BL	/		
		BBP	N/A	BL	/		
		DEHP	N/A	BL	/		
54	Black resistance (Tested as a whole)	Pb	BL	/	/	PASS	Apr. 12, 2017
		Cd	BL	/	/		
		Hg	BL	/	/		
		Cr(Cr(VI))	IN	/	N.D.		
		Br(PBBs&PBDEs)	BL	/	/		
		DBP	N/A	BL	/		
		BBP	N/A	BL	/		
		DEHP	N/A	BL	/		
DIBP	N/A	BL	/				

Verification Report

Report No. SCL01J022437

Page 24 of 99

Sample No.	Sample Description	Tested Items	XRF Screening Test	Phthalates Screening Test	Chemical Test (mg/kg)	Conclusion	Sample Received/ Resubmitted Date
55	Brown capacitance (Tested as a whole)	Pb	BL	/	/	PASS	Apr. 12, 2017
		Cd	BL	/	/		
		Hg	BL	/	/		
		Cr(Cr(VI))	BL	/	/		
		Br(PBBs&PBDEs)	BL	/	/		
		DBP	N/A	BL	/		
		BBP	N/A	BL	/		
		DEHP	N/A	BL	/		
56	White capacitance (Tested as a whole)	Pb	BL	/	/	PASS	Apr. 12, 2017
		Cd	BL	/	/		
		Hg	BL	/	/		
		Cr(Cr(VI))	BL	/	/		
		Br(PBBs&PBDEs)	BL	/	/		
		DBP	N/A	BL	/		
		BBP	N/A	BL	/		
		DEHP	N/A	BL	/		
57	Black body (Tested as a whole)	Pb	BL	/	/	PASS	Apr. 12, 2017
		Cd	BL	/	/		
		Hg	BL	/	/		
		Cr(Cr(VI))	BL	/	/		
		Br(PBBs&PBDEs)	IN	/	N.D.		
		DBP	N/A	BL	/		
		BBP	N/A	BL	/		
		DEHP	N/A	BL	/		
DIBP	N/A	BL	/				

Verification Report

Report No. SCL01J022437

Page 25 of 99

Sample No.	Sample Description	Tested Items	XRF Screening Test	Phthalates Screening Test	Chemical Test (mg/kg)	Conclusion	Sample Received/ Resubmitted Date
58	Silvery metal	Pb	BL	/	/	PASS	Apr. 12, 2017
		Cd	BL	/	/		
		Hg	BL	/	/		
		Cr(Cr(VI))	BL	/	/		
		Br(PBBs&PBDEs)	N/A	/	/		
		DBP	N/A	/	/		
		BBP	N/A	/	/		
		DEHP	N/A	/	/		
59	Black resistance (Tested as a whole)	Pb	$2.0 \times 10^{3 \#3}$	/	/	PASS	Apr. 12, 2017
		Cd	BL	/	/		
		Hg	BL	/	/		
		Cr(Cr(VI))	BL	/	/		
		Br(PBBs&PBDEs)	BL	/	/		
		DBP	N/A	BL	/		
		BBP	N/A	BL	/		
		DEHP	N/A	BL	/		
60	Crystal oscillator (Tested as a whole)	Pb	BL	/	/	PASS	Apr. 12, 2017
		Cd	BL	/	/		
		Hg	BL	/	/		
		Cr(Cr(VI))	IN	/	N.D.		
		Br(PBBs&PBDEs)	BL	/	/		
		DBP	N/A	BL	/		
		BBP	N/A	BL	/		
		DEHP	N/A	BL	/		
DIBP	N/A	BL	/				

Verification Report

Report No. SCL01J022437

Page 26 of 99

Sample No.	Sample Description	Tested Items	XRF Screening Test	Phthalates Screening Test	Chemical Test (mg/kg)	Conclusion	Sample Received/ Resubmitted Date
61	Light brown capacitance (Tested as a whole)	Pb	BL	/	/	PASS	Apr. 12, 2017
		Cd	BL	/	/		
		Hg	BL	/	/		
		Cr(Cr(VI))	BL	/	/		
		Br(PBBs&PBDEs)	BL	/	/		
		DBP	N/A	BL	/		
		BBP	N/A	BL	/		
		DEHP	N/A	BL	/		
62	Brown capacitance (Tested as a whole)	Pb	BL	/	/	PASS	Apr. 12, 2017
		Cd	BL	/	/		
		Hg	BL	/	/		
		Cr(Cr(VI))	BL	/	/		
		Br(PBBs&PBDEs)	BL	/	/		
		DBP	N/A	BL	/		
		BBP	N/A	BL	/		
		DEHP	N/A	BL	/		
63	Black diode (Tested as a whole)	Pb	BL	/	/	PASS	Apr. 12, 2017
		Cd	BL	/	/		
		Hg	BL	/	/		
		Cr(Cr(VI))	BL	/	/		
		Br(PBBs&PBDEs)	BL	/	/		
		DBP	N/A	BL	/		
		BBP	N/A	BL	/		
		DEHP	N/A	BL	/		
DIBP	N/A	BL	/				

Verification Report

Report No. SCL01J022437

Page 27 of 99

Sample No.	Sample Description	Tested Items	XRF Screening Test	Phthalates Screening Test	Chemical Test (mg/kg)	Conclusion	Sample Received/ Resubmitted Date
64	Brown-gray capacitance (Tested as a whole)	Pb	BL	/	/	PASS	Apr. 12, 2017
		Cd	BL	/	/		
		Hg	BL	/	/		
		Cr(Cr(VI))	BL	/	/		
		Br(PBBs&PBDEs)	BL	/	/		
		DBP	N/A	BL	/		
		BBP	N/A	BL	/		
		DEHP	N/A	BL	/		
		DIBP	N/A	BL	/		
65	LED (Tested as a whole)	Pb	BL	/	/	PASS	Apr. 12, 2017
		Cd	BL	/	/		
		Hg	BL	/	/		
		Cr(Cr(VI))	BL	/	/		
		Br(PBBs&PBDEs)	BL	/	/		
		DBP	N/A	BL	/		
		BBP	N/A	BL	/		
		DEHP	N/A	BL	/		
		DIBP	N/A	BL	/		
66	Gray-black inductance (Tested as a whole)	Pb	BL	/	/	PASS	Apr. 12, 2017
		Cd	BL	/	/		
		Hg	BL	/	/		
		Cr(Cr(VI))	BL	/	/		
		Br(PBBs&PBDEs)	BL	/	/		
		DBP	N/A	BL	/		
		BBP	N/A	BL	/		
		DEHP	N/A	BL	/		
		DIBP	N/A	BL	/		

Verification Report

Report No. SCL01J022437

Page 28 of 99

Sample No.	Sample Description	Tested Items	XRF Screening Test	Phthalates Screening Test	Chemical Test (mg/kg)	Conclusion	Sample Received/ Resubmitted Date
67	Black resistance (Tested as a whole)	Pb	$1.0 \times 10^{3\#3}$	/	/	PASS	Apr. 12, 2017
		Cd	BL	/	/		
		Hg	BL	/	/		
		Cr(Cr(VI))	BL	/	/		
		Br(PBBs&PBDEs)	BL	/	/		
		DBP	N/A	BL	/		
		BBP	N/A	BL	/		
		DEHP	N/A	BL	/		
		DIBP	N/A	BL	/		
68	Black body (Tested as a whole)	Pb	BL	/	/	PASS	Apr. 12, 2017
		Cd	BL	/	/		
		Hg	BL	/	/		
		Cr(Cr(VI))	BL	/	/		
		Br(PBBs&PBDEs)	BL	/	/		
		DBP	N/A	BL	/		
		BBP	N/A	BL	/		
		DEHP	N/A	BL	/		
		DIBP	N/A	BL	/		
69	Silvery metal	Pb	BL	/	/	PASS	Apr. 12, 2017
		Cd	BL	/	/		
		Hg	BL	/	/		
		Cr(Cr(VI))	BL	/	/		
		Br(PBBs&PBDEs)	N/A	/	/		
		DBP	N/A	/	/		
		BBP	N/A	/	/		
		DEHP	N/A	/	/		
		DIBP	N/A	/	/		

Verification Report

Report No. SCL01J022437

Page 29 of 99

Sample No.	Sample Description	Tested Items	XRF Screening Test	Phthalates Screening Test	Chemical Test (mg/kg)	Conclusion	Sample Received/ Resubmitted Date
70	IC (Tested as a whole)	Pb	BL	/	/	PASS	Apr. 12, 2017
		Cd	BL	/	/		
		Hg	BL	/	/		
		Cr(Cr(VI))	BL	/	/		
		Br(PBBs&PBDEs)	BL	/	/		
		DBP	N/A	BL	/		
		BBP	N/A	BL	/		
		DEHP	N/A	BL	/		
		DIBP	N/A	BL	/		
71	Black audion (Tested as a whole)	Pb	BL	/	/	PASS	Apr. 12, 2017
		Cd	BL	/	/		
		Hg	BL	/	/		
		Cr(Cr(VI))	BL	/	/		
		Br(PBBs&PBDEs)	BL	/	/		
		DBP	N/A	BL	/		
		BBP	N/A	BL	/		
		DEHP	N/A	BL	/		
		DIBP	N/A	BL	/		
72	Brown-gray capacitance (Tested as a whole)	Pb	BL	/	/	PASS	Apr. 12, 2017
		Cd	BL	/	/		
		Hg	BL	/	/		
		Cr(Cr(VI))	BL	/	/		
		Br(PBBs&PBDEs)	BL	/	/		
		DBP	N/A	BL	/		
		BBP	N/A	BL	/		
		DEHP	N/A	BL	/		
		DIBP	N/A	BL	/		

Verification Report

Report No. SCL01J022437

Page 30 of 99

Sample No.	Sample Description	Tested Items	XRF Screening Test	Phthalates Screening Test	Chemical Test (mg/kg)	Conclusion	Sample Received/ Resubmitted Date
73	White label with black printing	Pb	BL	/	/	PASS	Apr. 12, 2017
		Cd	BL	/	/		
		Hg	BL	/	/		
		Cr(Cr(VI))	BL	/	/		
		Br(PBBs&PBDEs)	BL	/	/		
		DBP	N/A	BL	/		
		BBP	N/A	BL	/		
		DEHP	N/A	BL	/		
		DIBP	N/A	BL	/		
74	IC (Tested as a whole)	Pb	BL	/	/	PASS	Apr. 12, 2017
		Cd	BL	/	/		
		Hg	BL	/	/		
		Cr(Cr(VI))	BL	/	/		
		Br(PBBs&PBDEs)	BL	/	/		
		DBP	N/A	BL	/		
		BBP	N/A	BL	/		
		DEHP	N/A	BL	/		
		DIBP	N/A	BL	/		
75	PCB (Tested as a whole)	Pb	BL	/	/	PASS	Apr. 12, 2017
		Cd	BL	/	/		
		Hg	BL	/	/		
		Cr(Cr(VI))	BL	/	/		
		Br(PBBs&PBDEs)	BL	/	/		
		DBP	N/A	BL	/		
		BBP	N/A	BL	/		
		DEHP	N/A	BL	/		
		DIBP	N/A	BL	/		

Verification Report

Report No. SCL01J022437

Page 31 of 99

Sample No.	Sample Description	Tested Items	XRF Screening Test	Phthalates Screening Test	Chemical Test (mg/kg)	Conclusion	Sample Received/ Resubmitted Date
76	Brown capacitance (Tested as a whole)	Pb	BL	/	/	PASS	Apr. 12, 2017
		Cd	BL	/	/		
		Hg	BL	/	/		
		Cr(Cr(VI))	BL	/	/		
		Br(PBBs&PBDEs)	BL	/	/		
		DBP	N/A	BL	/		
		BBP	N/A	BL	/		
		DEHP	N/A	BL	/		
		DIBP	N/A	BL	/		
77	Black body (Tested as a whole)	Pb	$1.1 \times 10^{4\#4}$	/	/	PASS	Apr. 12, 2017
		Cd	BL	/	/		
		Hg	BL	/	/		
		Cr(Cr(VI))	BL	/	/		
		Br(PBBs&PBDEs)	IN	/	N.D.		
		DBP	N/A	BL	/		
		BBP	N/A	BL	/		
		DEHP	N/A	BL	/		
		DIBP	N/A	BL	/		
78	Silvery metal	Pb	BL	/	/	PASS	Apr. 12, 2017
		Cd	BL	/	/		
		Hg	BL	/	/		
		Cr(Cr(VI))	BL	/	/		
		Br(PBBs&PBDEs)	N/A	/	/		
		DBP	N/A	/	/		
		BBP	N/A	/	/		
		DEHP	N/A	/	/		
		DIBP	N/A	/	/		

Verification Report

Report No. SCL01J022437

Page 32 of 99

Sample No.	Sample Description	Tested Items	XRF Screening Test	Phthalates Screening Test	Chemical Test (mg/kg)	Conclusion	Sample Received/ Resubmitted Date
79	IC (Tested as a whole)	Pb	BL	/	/	PASS	Apr. 12, 2017
		Cd	BL	/	/		
		Hg	BL	/	/		
		Cr(Cr(VI))	BL	/	/		
		Br(PBBs&PBDEs)	BL	/	/		
		DBP	N/A	BL	/		
		BBP	N/A	BL	/		
		DEHP	N/A	BL	/		
		DIBP	N/A	BL	/		
80	Black body (Tested as a whole)	Pb	1.4×10 ⁴ #4	/	/	PASS	Apr. 12, 2017
		Cd	BL	/	/		
		Hg	BL	/	/		
		Cr(Cr(VI))	BL	/	/		
		Br(PBBs&PBDEs)	BL	/	/		
		DBP	N/A	BL	/		
		BBP	N/A	BL	/		
		DEHP	N/A	BL	/		
		DIBP	N/A	BL	/		
81	Silvery metal	Pb	BL	/	/	PASS	Apr. 12, 2017
		Cd	BL	/	/		
		Hg	BL	/	/		
		Cr(Cr(VI))	BL	/	/		
		Br(PBBs&PBDEs)	N/A	/	/		
		DBP	N/A	/	/		
		BBP	N/A	/	/		
		DEHP	N/A	/	/		
		DIBP	N/A	/	/		

Verification Report

Report No. SCL01J022437

Page 33 of 99

Sample No.	Sample Description	Tested Items	XRF Screening Test	Phthalates Screening Test	Chemical Test (mg/kg)	Conclusion	Sample Received/ Resubmitted Date
82	Black body (Tested as a whole)	Pb	BL	/	/	PASS	Apr. 12, 2017
		Cd	BL	/	/		
		Hg	BL	/	/		
		Cr(Cr(VI))	BL	/	/		
		Br(PBBs&PBDEs)	BL	/	/		
		DBP	N/A	BL	/		
		BBP	N/A	BL	/		
		DEHP	N/A	BL	/		
		DIBP	N/A	BL	/		
83	Silvery metal	Pb	BL	/	/	PASS	Apr. 12, 2017
		Cd	BL	/	/		
		Hg	BL	/	/		
		Cr(Cr(VI))	BL	/	/		
		Br(PBBs&PBDEs)	N/A	/	/		
		DBP	N/A	/	/		
		BBP	N/A	/	/		
		DEHP	N/A	/	/		
		DIBP	N/A	/	/		
84	Black fuse (Tested as a whole)	Pb	BL	/	/	PASS	Apr. 12, 2017
		Cd	BL	/	/		
		Hg	BL	/	/		
		Cr(Cr(VI))	BL	/	/		
		Br(PBBs&PBDEs)	IN	/	N.D.		
		DBP	N/A	BL	/		
		BBP	N/A	BL	/		
		DEHP	N/A	BL	/		
		DIBP	N/A	BL	/		

Verification Report

Report No. SCL01J022437

Page 34 of 99

Sample No.	Sample Description	Tested Items	XRF Screening Test	Phthalates Screening Test	Chemical Test (mg/kg)	Conclusion	Sample Received/ Resubmitted Date
85	White label with black printing	Pb	BL	/	/	PASS	Apr. 12, 2017
		Cd	BL	/	/		
		Hg	BL	/	/		
		Cr(Cr(VI))	BL	/	/		
		Br(PBBs&PBDEs)	BL	/	/		
		DBP	N/A	BL	/		
		BBP	N/A	BL	/		
		DEHP	N/A	BL	/		
		DIBP	N/A	BL	/		
86	Black plastic with gray printing	Pb	BL	/	/	PASS	Apr. 12, 2017
		Cd	BL	/	/		
		Hg	BL	/	/		
		Cr(Cr(VI))	BL	/	/		
		Br(PBBs&PBDEs)	BL	/	/		
		DBP	N/A	BL	/		
		BBP	N/A	BL	/		
		DEHP	N/A	BL	/		
		DIBP	N/A	BL	/		
87	Brown glue	Pb	BL	/	/	PASS	Apr. 12, 2017
		Cd	BL	/	/		
		Hg	BL	/	/		
		Cr(Cr(VI))	BL	/	/		
		Br(PBBs&PBDEs)	BL	/	/		
		DBP	N/A	BL	/		
		BBP	N/A	BL	/		
		DEHP	N/A	BL	/		
		DIBP	N/A	BL	/		

Verification Report

Report No. SCL01J022437

Page 35 of 99

Sample No.	Sample Description	Tested Items	XRF Screening Test	Phthalates Screening Test	Chemical Test (mg/kg)	Conclusion	Sample Received/ Resubmitted Date
88	Red enamelled wire	Pb	BL	/	/	PASS	Apr. 12, 2017
		Cd	BL	/	/		
		Hg	BL	/	/		
		Cr(Cr(VI))	BL	/	/		
		Br(PBBs&PBDEs)	BL	/	/		
		DBP	N/A	BL	/		
		BBP	N/A	BL	/		
		DEHP	N/A	BL	/		
		DIBP	N/A	BL	/		
89	Green enamelled wire	Pb	BL	/	/	PASS	Apr. 12, 2017
		Cd	BL	/	/		
		Hg	BL	/	/		
		Cr(Cr(VI))	BL	/	/		
		Br(PBBs&PBDEs)	BL	/	/		
		DBP	N/A	BL	/		
		BBP	N/A	BL	/		
		DEHP	N/A	BL	/		
		DIBP	N/A	BL	/		
90	Cupreous enamelled wire	Pb	BL	/	/	PASS	Apr. 12, 2017
		Cd	BL	/	/		
		Hg	BL	/	/		
		Cr(Cr(VI))	BL	/	/		
		Br(PBBs&PBDEs)	BL	/	/		
		DBP	N/A	BL	/		
		BBP	N/A	BL	/		
		DEHP	N/A	BL	/		
		DIBP	N/A	BL	/		

Verification Report

Report No. SCL01J022437

Page 36 of 99

Sample No.	Sample Description	Tested Items	XRF Screening Test	Phthalates Screening Test	Chemical Test (mg/kg)	Conclusion	Sample Received/ Resubmitted Date
91	Deep gray magnet	Pb	BL	/	/	PASS	Apr. 12, 2017
		Cd	BL	/	/		
		Hg	BL	/	/		
		Cr(Cr(VI))	BL	/	/		
		Br(PBBs&PBDEs)	N/A	/	/		
		DBP	N/A	/	/		
		BBP	N/A	/	/		
		DEHP	N/A	/	/		
		DIBP	N/A	/	/		
92	Silvery metal	Pb	BL	/	/	PASS	Apr. 12, 2017
		Cd	BL	/	/		
		Hg	BL	/	/		
		Cr(Cr(VI))	BL	/	/		
		Br(PBBs&PBDEs)	N/A	/	/		
		DBP	N/A	/	/		
		BBP	N/A	/	/		
		DEHP	N/A	/	/		
		DIBP	N/A	/	/		
93	Black body (Tested as a whole)	Pb	BL	/	/	PASS	Apr. 12, 2017
		Cd	BL	/	/		
		Hg	BL	/	/		
		Cr(Cr(VI))	BL	/	/		
		Br(PBBs&PBDEs)	BL	/	/		
		DBP	N/A	BL	/		
		BBP	N/A	BL	/		
		DEHP	N/A	BL	/		
		DIBP	N/A	BL	/		

Verification Report

Report No. SCL01J022437

Page 37 of 99

Sample No.	Sample Description	Tested Items	XRF Screening Test	Phthalates Screening Test	Chemical Test (mg/kg)	Conclusion	Sample Received/ Resubmitted Date
94	Silvery metal	Pb	BL	/	/	PASS	Apr. 12, 2017
		Cd	BL	/	/		
		Hg	BL	/	/		
		Cr(Cr(VI))	BL	/	/		
		Br(PBBs&PBDEs)	N/A	/	/		
		DBP	N/A	/	/		
		BBP	N/A	/	/		
		DEHP	N/A	/	/		
95	White plastic	Pb	BL	/	/	PASS	Apr. 12, 2017
		Cd	BL	/	/		
		Hg	BL	/	/		
		Cr(Cr(VI))	BL	/	/		
		Br(PBBs&PBDEs)	BL	/	/		
		DBP	N/A	BL	/		
		BBP	N/A	BL	/		
		DEHP	N/A	BL	/		
96	Golden metal shell	Pb	BL	/	/	PASS	Apr. 12, 2017
		Cd	BL	/	/		
		Hg	BL	/	/		
		Cr(Cr(VI))	BL	/	/		
		Br(PBBs&PBDEs)	N/A	/	/		
		DBP	N/A	/	/		
		BBP	N/A	/	/		
		DEHP	N/A	/	/		
DIBP	N/A	/	/				

Verification Report

Report No. SCL01J022437

Page 38 of 99

Sample No.	Sample Description	Tested Items	XRF Screening Test	Phthalates Screening Test	Chemical Test (mg/kg)	Conclusion	Sample Received/ Resubmitted Date
97	Golden metal axle	Pb	BL	/	/	PASS	Apr. 12, 2017
		Cd	BL	/	/		
		Hg	BL	/	/		
		Cr(Cr(VI))	BL	/	/		
		Br(PBBs&PBDEs)	N/A	/	/		
		DBP	N/A	/	/		
		BBP	N/A	/	/		
		DEHP	N/A	/	/		
		DIBP	N/A	/	/		
98	Crystal oscillator (Tested as a whole)	Pb	BL	/	/	PASS	Apr. 12, 2017
		Cd	BL	/	/		
		Hg	BL	/	/		
		Cr(Cr(VI))	IN	/	N.D.		
		Br(PBBs&PBDEs)	BL	/	/		
		DBP	N/A	BL	/		
		BBP	N/A	BL	/		
		DEHP	N/A	BL	/		
		DIBP	N/A	BL	/		
99	Silvery metal	Pb	BL	/	/	PASS	Apr. 12, 2017
		Cd	BL	/	/		
		Hg	BL	/	/		
		Cr(Cr(VI))	BL	/	/		
		Br(PBBs&PBDEs)	N/A	/	/		
		DBP	N/A	/	/		
		BBP	N/A	/	/		
		DEHP	N/A	/	/		
		DIBP	N/A	/	/		

Verification Report

Report No. SCL01J022437

Page 39 of 99

Sample No.	Sample Description	Tested Items	XRF Screening Test	Phthalates Screening Test	Chemical Test (mg/kg)	Conclusion	Sample Received/ Resubmitted Date
100	White body (Tested as a whole)	Pb	BL	/	/	PASS	Apr. 12, 2017
		Cd	BL	/	/		
		Hg	BL	/	/		
		Cr(Cr(VI))	BL	/	/		
		Br(PBBs&PBDEs)	BL	/	/		
		DBP	N/A	BL	/		
		BBP	N/A	BL	/		
		DEHP	N/A	BL	/		
101	Gray capacitance (Tested as a whole)	Pb	BL	/	/	PASS	Apr. 12, 2017
		Cd	BL	/	/		
		Hg	BL	/	/		
		Cr(Cr(VI))	BL	/	/		
		Br(PBBs&PBDEs)	BL	/	/		
		DBP	N/A	BL	/		
		BBP	N/A	BL	/		
		DEHP	N/A	BL	/		
102	IC (Tested as a whole)	Pb	BL	/	/	PASS	Apr. 12, 2017
		Cd	BL	/	/		
		Hg	BL	/	/		
		Cr(Cr(VI))	BL	/	/		
		Br(PBBs&PBDEs)	BL	/	/		
		DBP	N/A	BL	/		
		BBP	N/A	BL	/		
		DEHP	N/A	BL	/		
DIBP	N/A	BL	/				

Verification Report

Report No. SCL01J022437

Page 40 of 99

Sample No.	Sample Description	Tested Items	XRF Screening Test	Phthalates Screening Test	Chemical Test (mg/kg)	Conclusion	Sample Received/ Resubmitted Date
103	IC (Tested as a whole)	Pb	BL	/	/	PASS	Apr. 12, 2017
		Cd	BL	/	/		
		Hg	BL	/	/		
		Cr(Cr(VI))	BL	/	/		
		Br(PBBs&PBDEs)	BL	/	/		
		DBP	N/A	BL	/		
		BBP	N/A	BL	/		
		DEHP	N/A	BL	/		
		DIBP	N/A	BL	/		
104	Gray capacitance (Tested as a whole)	Pb	BL	/	/	PASS	Apr. 12, 2017
		Cd	BL	/	/		
		Hg	BL	/	/		
		Cr(Cr(VI))	BL	/	/		
		Br(PBBs&PBDEs)	BL	/	/		
		DBP	N/A	BL	/		
		BBP	N/A	BL	/		
		DEHP	N/A	BL	/		
		DIBP	N/A	BL	/		
105	Gray/white inductance (Tested as a whole)	Pb	BL	/	/	PASS	Apr. 12, 2017
		Cd	BL	/	/		
		Hg	BL	/	/		
		Cr(Cr(VI))	BL	/	/		
		Br(PBBs&PBDEs)	BL	/	/		
		DBP	N/A	BL	/		
		BBP	N/A	BL	/		
		DEHP	N/A	BL	/		
		DIBP	N/A	BL	/		

Verification Report

Report No. SCL01J022437

Page 41 of 99

Sample No.	Sample Description	Tested Items	XRF Screening Test	Phthalates Screening Test	Chemical Test (mg/kg)	Conclusion	Sample Received/ Resubmitted Date
106	Black resistance (Tested as a whole)	Pb	BL	/	/	PASS	Apr. 12, 2017
		Cd	BL	/	/		
		Hg	BL	/	/		
		Cr(Cr(VI))	BL	/	/		
		Br(PBBs&PBDEs)	BL	/	/		
		DBP	N/A	BL	/		
		BBP	N/A	BL	/		
		DEHP	N/A	BL	/		
		DIBP	N/A	BL	/		
107	Deep gray capacitance (Tested as a whole)	Pb	BL	/	/	PASS	Apr. 12, 2017
		Cd	BL	/	/		
		Hg	BL	/	/		
		Cr(Cr(VI))	BL	/	/		
		Br(PBBs&PBDEs)	BL	/	/		
		DBP	N/A	BL	/		
		BBP	N/A	BL	/		
		DEHP	N/A	BL	/		
		DIBP	N/A	BL	/		
108	Brown capacitance (Tested as a whole)	Pb	BL	/	/	PASS	Apr. 12, 2017
		Cd	BL	/	/		
		Hg	BL	/	/		
		Cr(Cr(VI))	BL	/	/		
		Br(PBBs&PBDEs)	BL	/	/		
		DBP	N/A	BL	/		
		BBP	N/A	BL	/		
		DEHP	N/A	BL	/		
		DIBP	N/A	BL	/		

Verification Report

Report No. SCL01J022437

Page 42 of 99

Sample No.	Sample Description	Tested Items	XRF Screening Test	Phthalates Screening Test	Chemical Test (mg/kg)	Conclusion	Sample Received/ Resubmitted Date
109	Light gray capacitance (Tested as a whole)	Pb	BL	/	/	PASS	Apr. 12, 2017
		Cd	BL	/	/		
		Hg	BL	/	/		
		Cr(Cr(VI))	BL	/	/		
		Br(PBBs&PBDEs)	BL	/	/		
		DBP	N/A	BL	/		
		BBP	N/A	BL	/		
		DEHP	N/A	BL	/		
		DIBP	N/A	BL	/		
110	Blue capacitance (Tested as a whole)	Pb	BL	/	/	PASS	Apr. 12, 2017
		Cd	BL	/	/		
		Hg	BL	/	/		
		Cr(Cr(VI))	BL	/	/		
		Br(PBBs&PBDEs)	BL	/	/		
		DBP	N/A	BL	/		
		BBP	N/A	BL	/		
		DEHP	N/A	BL	/		
		DIBP	N/A	BL	/		
111	PCB (Tested as a whole)	Pb	BL	/	/	PASS	Apr. 12, 2017
		Cd	BL	/	/		
		Hg	BL	/	/		
		Cr(Cr(VI))	BL	/	/		
		Br(PBBs&PBDEs)	IN	/	N.D.		
		DBP	N/A	BL	/		
		BBP	N/A	BL	/		
		DEHP	N/A	BL	/		
		DIBP	N/A	BL	/		

Verification Report

Report No. SCL01J022437

Page 43 of 99

Sample No.	Sample Description	Tested Items	XRF Screening Test	Phthalates Screening Test	Chemical Test (mg/kg)	Conclusion	Sample Received/ Resubmitted Date
112	PCB (Tested as a whole)	Pb	BL	/	/	PASS	Apr. 12, 2017
		Cd	BL	/	/		
		Hg	BL	/	/		
		Cr(Cr(VI))	BL	/	/		
		Br(PBBs&PBDEs)	IN	/	N.D.		
		DBP	N/A	BL	/		
		BBP	N/A	BL	/		
		DEHP	N/A	BL	/		
		DIBP	N/A	BL	/		
113	Silvery metal	Pb	BL	/	/	PASS	Apr. 12, 2017
		Cd	BL	/	/		
		Hg	BL	/	/		
		Cr(Cr(VI))	BL	/	/		
		Br(PBBs&PBDEs)	N/A	/	/		
		DBP	N/A	/	/		
		BBP	N/A	/	/		
		DEHP	N/A	/	/		
		DIBP	N/A	/	/		
114	Light brown capacitance (Tested as a whole)	Pb	BL	/	/	PASS	Apr. 12, 2017
		Cd	BL	/	/		
		Hg	BL	/	/		
		Cr(Cr(VI))	BL	/	/		
		Br(PBBs&PBDEs)	BL	/	/		
		DBP	N/A	BL	/		
		BBP	N/A	BL	/		
		DEHP	N/A	BL	/		
		DIBP	N/A	BL	/		

Verification Report

Report No. SCL01J022437

Page 44 of 99

Sample No.	Sample Description	Tested Items	XRF Screening Test	Phthalates Screening Test	Chemical Test (mg/kg)	Conclusion	Sample Received/ Resubmitted Date
115	Black body (Tested as a whole)	Pb	1.2×10 ⁴ #4	/	/	PASS	Apr. 12, 2017
		Cd	BL	/	/		
		Hg	BL	/	/		
		Cr(Cr(VI))	BL	/	/		
		Br(PBBs&PBDEs)	BL	/	/		
		DBP	N/A	BL	/		
		BBP	N/A	BL	/		
		DEHP	N/A	BL	/		
		DIBP	N/A	BL	/		
116	Silvery metal	Pb	BL	/	/	PASS	Apr. 12, 2017
		Cd	BL	/	/		
		Hg	BL	/	/		
		Cr(Cr(VI))	BL	/	/		
		Br(PBBs&PBDEs)	N/A	/	/		
		DBP	N/A	/	/		
		BBP	N/A	/	/		
		DEHP	N/A	/	/		
		DIBP	N/A	/	/		
117	Black body (Tested as a whole)	Pb	BL	/	/	PASS	Apr. 12, 2017
		Cd	BL	/	/		
		Hg	BL	/	/		
		Cr(Cr(VI))	BL	/	/		
		Br(PBBs&PBDEs)	BL	/	/		
		DBP	N/A	BL	/		
		BBP	N/A	BL	/		
		DEHP	N/A	BL	/		
		DIBP	N/A	BL	/		

Verification Report

Report No. SCL01J022437

Page 45 of 99

Sample No.	Sample Description	Tested Items	XRF Screening Test	Phthalates Screening Test	Chemical Test (mg/kg)	Conclusion	Sample Received/ Resubmitted Date
118	Silvery metal	Pb	BL	/	/	PASS	Apr. 12, 2017
		Cd	BL	/	/		
		Hg	BL	/	/		
		Cr(Cr(VI))	BL	/	/		
		Br(PBBs&PBDEs)	N/A	/	/		
		DBP	N/A	/	/		
		BBP	N/A	/	/		
		DEHP	N/A	/	/		
		DIBP	N/A	/	/		
119	Black body (Tested as a whole)	Pb	1.4×10 ⁴ #4	/	/	PASS	Apr. 12, 2017
		Cd	BL	/	/		
		Hg	BL	/	/		
		Cr(Cr(VI))	BL	/	/		
		Br(PBBs&PBDEs)	IN	/	N.D.		
		DBP	N/A	BL	/		
		BBP	N/A	BL	/		
		DEHP	N/A	BL	/		
		DIBP	N/A	BL	/		
120	Silvery metal	Pb	BL	/	/	PASS	Apr. 12, 2017
		Cd	BL	/	/		
		Hg	BL	/	/		
		Cr(Cr(VI))	BL	/	/		
		Br(PBBs&PBDEs)	N/A	/	/		
		DBP	N/A	/	/		
		BBP	N/A	/	/		
		DEHP	N/A	/	/		
		DIBP	N/A	/	/		

Verification Report

Report No. SCL01J022437

Page 46 of 99

Sample No.	Sample Description	Tested Items	XRF Screening Test	Phthalates Screening Test	Chemical Test (mg/kg)	Conclusion	Sample Received/ Resubmitted Date
121	Black resistance (Tested as a whole)	Pb	$2.4 \times 10^{3\#3}$	/	/	PASS	Apr. 12, 2017
		Cd	BL	/	/		
		Hg	BL	/	/		
		Cr(Cr(VI))	BL	/	/		
		Br(PBBs&PBDEs)	BL	/	/		
		DBP	N/A	BL	/		
		BBP	N/A	BL	/		
		DEHP	N/A	BL	/		
		DIBP	N/A	BL	/		
122	Brown-gray capacitance (Tested as a whole)	Pb	BL	/	/	PASS	Apr. 12, 2017
		Cd	BL	/	/		
		Hg	BL	/	/		
		Cr(Cr(VI))	BL	/	/		
		Br(PBBs&PBDEs)	BL	/	/		
		DBP	N/A	BL	/		
		BBP	N/A	BL	/		
		DEHP	N/A	BL	/		
		DIBP	N/A	BL	/		
123	Light brown capacitance (Tested as a whole)	Pb	BL	/	/	PASS	Apr. 12, 2017
		Cd	BL	/	/		
		Hg	BL	/	/		
		Cr(Cr(VI))	BL	/	/		
		Br(PBBs&PBDEs)	BL	/	/		
		DBP	N/A	BL	/		
		BBP	N/A	BL	/		
		DEHP	N/A	BL	/		
		DIBP	N/A	BL	/		

Verification Report

Report No. SCL01J022437

Page 47 of 99

Sample No.	Sample Description	Tested Items	XRF Screening Test	Phthalates Screening Test	Chemical Test (mg/kg)	Conclusion	Sample Received/ Resubmitted Date
124	Black resistance (Tested as a whole)	Pb	6.0×10 ^{2#3}	/	/	PASS	Apr. 12, 2017
		Cd	BL	/	/		
		Hg	BL	/	/		
		Cr(Cr(VI))	IN	/	N.D.		
		Br(PBBs&PBDEs)	BL	/	/		
		DBP	N/A	BL	/		
		BBP	N/A	BL	/		
		DEHP	N/A	BL	/		
		DIBP	N/A	BL	/		
125	Gray-white capacitance (Tested as a whole)	Pb	BL	/	/	PASS	Apr. 12, 2017
		Cd	BL	/	/		
		Hg	BL	/	/		
		Cr(Cr(VI))	BL	/	/		
		Br(PBBs&PBDEs)	BL	/	/		
		DBP	N/A	BL	/		
		BBP	N/A	BL	/		
		DEHP	N/A	BL	/		
		DIBP	N/A	BL	/		
126	Gray plastic	Pb	BL	/	/	PASS	Apr. 12, 2017
		Cd	BL	/	/		
		Hg	BL	/	/		
		Cr(Cr(VI))	BL	/	/		
		Br(PBBs&PBDEs)	IN	/	N.D.		
		DBP	N/A	BL	/		
		BBP	N/A	BL	/		
		DEHP	N/A	BL	/		
		DIBP	N/A	BL	/		

Verification Report

Report No. SCL01J022437

Page 48 of 99

Sample No.	Sample Description	Tested Items	XRF Screening Test	Phthalates Screening Test	Chemical Test (mg/kg)	Conclusion	Sample Received/ Resubmitted Date
127	Silvery metal shell	Pb	BL	/	/	PASS	Apr. 12, 2017
		Cd	BL	/	/		
		Hg	BL	/	/		
		Cr(Cr(VI))	BL	/	/		
		Br(PBBs&PBDEs)	N/A	/	/		
		DBP	N/A	/	/		
		BBP	N/A	/	/		
		DEHP	N/A	/	/		
		DIBP	N/A	/	/		
128	Golden metal pin	Pb	BL	/	/	PASS	Apr. 12, 2017
		Cd	BL	/	/		
		Hg	BL	/	/		
		Cr(Cr(VI))	BL	/	/		
		Br(PBBs&PBDEs)	N/A	/	/		
		DBP	N/A	/	/		
		BBP	N/A	/	/		
		DEHP	N/A	/	/		
		DIBP	N/A	/	/		
129	Gray-black plastic	Pb	BL	/	/	PASS	Apr. 12, 2017
		Cd	BL	/	/		
		Hg	BL	/	/		
		Cr(Cr(VI))	BL	/	/		
		Br(PBBs&PBDEs)	BL	/	/		
		DBP	N/A	BL	/		
		BBP	N/A	BL	/		
		DEHP	N/A	BL	/		
		DIBP	N/A	BL	/		

Verification Report

Report No. SCL01J022437

Page 49 of 99

Sample No.	Sample Description	Tested Items	XRF Screening Test	Phthalates Screening Test	Chemical Test (mg/kg)	Conclusion	Sample Received/ Resubmitted Date
130	Golden metal	Pb	BL	/	/	PASS	Apr. 12, 2017
		Cd	BL	/	/		
		Hg	BL	/	/		
		Cr(Cr(VI))	BL	/	/		
		Br(PBBs&PBDEs)	N/A	/	/		
		DBP	N/A	/	/		
		BBP	N/A	/	/		
		DEHP	N/A	/	/		
		DIBP	N/A	/	/		
131	Beige-white plastic	Pb	BL	/	/	PASS	Apr. 12, 2017
		Cd	BL	/	/		
		Hg	BL	/	/		
		Cr(Cr(VI))	BL	/	/		
		Br(PBBs&PBDEs)	BL	/	/		
		DBP	N/A	BL	/		
		BBP	N/A	BL	/		
		DEHP	N/A	BL	/		
		DIBP	N/A	BL	/		
132	Black plastic	Pb	BL	/	/	PASS	Apr. 12, 2017
		Cd	BL	/	/		
		Hg	BL	/	/		
		Cr(Cr(VI))	BL	/	/		
		Br(PBBs&PBDEs)	BL	/	/		
		DBP	N/A	BL	/		
		BBP	N/A	BL	/		
		DEHP	N/A	BL	/		
		DIBP	N/A	BL	/		

Verification Report

Report No. SCL01J022437

Page 50 of 99

Sample No.	Sample Description	Tested Items	XRF Screening Test	Phthalates Screening Test	Chemical Test (mg/kg)	Conclusion	Sample Received/ Resubmitted Date
133	Silvery metal shell	Pb	BL	/	/	PASS	Apr. 12, 2017
		Cd	BL	/	/		
		Hg	BL	/	/		
		Cr(Cr(VI))	BL	/	/		
		Br(PBBs&PBDEs)	N/A	/	/		
		DBP	N/A	/	/		
		BBP	N/A	/	/		
		DEHP	N/A	/	/		
		DIBP	N/A	/	/		
134	Silvery metal sheet	Pb	BL	/	/	PASS	Apr. 12, 2017
		Cd	BL	/	/		
		Hg	BL	/	/		
		Cr(Cr(VI))	IN	/	N.D. ▼		
		Br(PBBs&PBDEs)	N/A	/	/		
		DBP	N/A	/	/		
		BBP	N/A	/	/		
		DEHP	N/A	/	/		
		DIBP	N/A	/	/		
135	Silvery metal pin	Pb	BL	/	/	PASS	Apr. 12, 2017
		Cd	BL	/	/		
		Hg	BL	/	/		
		Cr(Cr(VI))	BL	/	/		
		Br(PBBs&PBDEs)	N/A	/	/		
		DBP	N/A	/	/		
		BBP	N/A	/	/		
		DEHP	N/A	/	/		
		DIBP	N/A	/	/		

Verification Report

Report No. SCL01J022437

Page 51 of 99

Sample No.	Sample Description	Tested Items	XRF Screening Test	Phthalates Screening Test	Chemical Test (mg/kg)	Conclusion	Sample Received/ Resubmitted Date
136	Black plastic	Pb	BL	/	/	PASS	Apr. 12, 2017
		Cd	BL	/	/		
		Hg	BL	/	/		
		Cr(Cr(VI))	BL	/	/		
		Br(PBBs&PBDEs)	BL	/	/		
		DBP	N/A	BL	/		
		BBP	N/A	BL	/		
		DEHP	N/A	BL	/		
		DIBP	N/A	BL	/		
137	Yellow body (Tested as a whole)	Pb	BL	/	/	PASS	Apr. 12, 2017
		Cd	BL	/	/		
		Hg	BL	/	/		
		Cr(Cr(VI))	BL	/	/		
		Br(PBBs&PBDEs)	BL	/	/		
		DBP	N/A	BL	/		
		BBP	N/A	BL	/		
		DEHP	N/A	BL	/		
		DIBP	N/A	BL	/		
138	Silvery metal	Pb	BL	/	/	PASS	Apr. 12, 2017
		Cd	BL	/	/		
		Hg	BL	/	/		
		Cr(Cr(VI))	BL	/	/		
		Br(PBBs&PBDEs)	N/A	/	/		
		DBP	N/A	/	/		
		BBP	N/A	/	/		
		DEHP	N/A	/	/		
		DIBP	N/A	/	/		

Verification Report

Report No. SCL01J022437

Page 52 of 99

Sample No.	Sample Description	Tested Items	XRF Screening Test	Phthalates Screening Test	Chemical Test (mg/kg)	Conclusion	Sample Received/ Resubmitted Date
139	Green body (Tested as a whole)	Pb	BL	/	/	PASS	Apr. 12, 2017
		Cd	BL	/	/		
		Hg	BL	/	/		
		Cr(Cr(VI))	BL	/	/		
		Br(PBBs&PBDEs)	BL	/	/		
		DBP	N/A	BL	/		
		BBP	N/A	BL	/		
		DEHP	N/A	BL	/		
		DIBP	N/A	BL	/		
140	Silvery metal	Pb	BL	/	/	PASS	Apr. 12, 2017
		Cd	BL	/	/		
		Hg	BL	/	/		
		Cr(Cr(VI))	BL	/	/		
		Br(PBBs&PBDEs)	N/A	/	/		
		DBP	N/A	/	/		
		BBP	N/A	/	/		
		DEHP	N/A	/	/		
		DIBP	N/A	/	/		
141	Deep gray magnet with black printing	Pb	BL	/	/	PASS	Apr. 12, 2017
		Cd	BL	/	/		
		Hg	BL	/	/		
		Cr(Cr(VI))	BL	/	/		
		Br(PBBs&PBDEs)	N/A	/	/		
		DBP	N/A	/	/		
		BBP	N/A	/	/		
		DEHP	N/A	/	/		
		DIBP	N/A	/	/		

Verification Report

Report No. SCL01J022437

Page 53 of 99

Sample No.	Sample Description	Tested Items	XRF Screening Test	Phthalates Screening Test	Chemical Test (mg/kg)	Conclusion	Sample Received/ Resubmitted Date
142	Cupreous enamelled wire	Pb	BL	/	/	PASS	Apr. 12, 2017
		Cd	BL	/	/		
		Hg	BL	/	/		
		Cr(Cr(VI))	BL	/	/		
		Br(PBBs&PBDEs)	BL	/	/		
		DBP	N/A	BL	/		
		BBP	N/A	BL	/		
		DEHP	N/A	BL	/		
		DIBP	N/A	BL	/		
143	Black glue	Pb	BL	/	/	PASS	Apr. 12, 2017
		Cd	BL	/	/		
		Hg	BL	/	/		
		Cr(Cr(VI))	BL	/	/		
		Br(PBBs&PBDEs)	BL	/	/		
		DBP	N/A	BL	/		
		BBP	N/A	BL	/		
		DEHP	N/A	BL	/		
		DIBP	N/A	BL	/		
144	Green plastic	Pb	BL	/	/	PASS	Apr. 12, 2017
		Cd	BL	/	/		
		Hg	BL	/	/		
		Cr(Cr(VI))	BL	/	/		
		Br(PBBs&PBDEs)	BL	/	/		
		DBP	N/A	BL	/		
		BBP	N/A	BL	/		
		DEHP	N/A	BL	/		
		DIBP	N/A	BL	/		

Verification Report

Report No. SCL01J022437

Page 54 of 99

Sample No.	Sample Description	Tested Items	XRF Screening Test	Phthalates Screening Test	Chemical Test (mg/kg)	Conclusion	Sample Received/ Resubmitted Date
145	Silvery metal	Pb	BL	/	/	PASS	Apr. 12, 2017
		Cd	BL	/	/		
		Hg	BL	/	/		
		Cr(Cr(VI))	BL	/	/		
		Br(PBBs&PBDEs)	N/A	/	/		
		DBP	N/A	/	/		
		BBP	N/A	/	/		
		DEHP	N/A	/	/		
		DIBP	N/A	/	/		
146	Blue body (Tested as a whole)	Pb	BL	/	/	PASS	Apr. 12, 2017
		Cd	BL	/	/		
		Hg	BL	/	/		
		Cr(Cr(VI))	BL	/	/		
		Br(PBBs&PBDEs)	BL	/	/		
		DBP	N/A	BL	/		
		BBP	N/A	BL	/		
		DEHP	N/A	BL	/		
		DIBP	N/A	BL	/		
147	Silvery metal	Pb	BL	/	/	PASS	Apr. 12, 2017
		Cd	BL	/	/		
		Hg	BL	/	/		
		Cr(Cr(VI))	BL	/	/		
		Br(PBBs&PBDEs)	N/A	/	/		
		DBP	N/A	/	/		
		BBP	N/A	/	/		
		DEHP	N/A	/	/		
		DIBP	N/A	/	/		

Verification Report

Report No. SCL01J022437

Page 55 of 99

Sample No.	Sample Description	Tested Items	XRF Screening Test	Phthalates Screening Test	Chemical Test (mg/kg)	Conclusion	Sample Received/ Resubmitted Date
148	Black body (Tested as a whole)	Pb	$7.0 \times 10^{3\#4}$	/	/	PASS	Apr. 12, 2017
		Cd	BL	/	/		
		Hg	BL	/	/		
		Cr(Cr(VI))	BL	/	/		
		Br(PBBs&PBDEs)	BL	/	/		
		DBP	N/A	BL	/		
		BBP	N/A	BL	/		
		DEHP	N/A	BL	/		
		DIBP	N/A	BL	/		
149	Silvery metal	Pb	BL	/	/	PASS	Apr. 12, 2017
		Cd	BL	/	/		
		Hg	BL	/	/		
		Cr(Cr(VI))	BL	/	/		
		Br(PBBs&PBDEs)	N/A	/	/		
		DBP	N/A	/	/		
		BBP	N/A	/	/		
		DEHP	N/A	/	/		
		DIBP	N/A	/	/		
150	Black body (Tested as a whole)	Pb	BL	/	/	PASS	Apr. 12, 2017
		Cd	BL	/	/		
		Hg	BL	/	/		
		Cr(Cr(VI))	BL	/	/		
		Br(PBBs&PBDEs)	IN	/	N.D.		
		DBP	N/A	BL	/		
		BBP	N/A	BL	/		
		DEHP	N/A	BL	/		
		DIBP	N/A	BL	/		

Verification Report

Report No. SCL01J022437

Page 56 of 99

Sample No.	Sample Description	Tested Items	XRF Screening Test	Phthalates Screening Test	Chemical Test (mg/kg)	Conclusion	Sample Received/ Resubmitted Date
151	Silvery metal	Pb	BL	/	/	PASS	Apr. 12, 2017/ Jun. 30, 2017
		Cd	BL	/	/		
		Hg	BL	/	/		
		Cr(Cr(VI))	BL	/	/		
		Br(PBBs&PBDEs)	N/A	/	/		
		DBP	N/A	/	/		
		BBP	N/A	/	/		
		DEHP	N/A	/	/		
152	Beige-white plastic	Pb	BL	/	/	PASS	Apr. 12, 2017
		Cd	BL	/	/		
		Hg	BL	/	/		
		Cr(Cr(VI))	BL	/	/		
		Br(PBBs&PBDEs)	BL	/	/		
		DBP	N/A	BL	/		
		BBP	N/A	BL	/		
		DEHP	N/A	BL	/		
153	Semi-transparent body (Tested as a whole)	Pb	BL	/	/	PASS	Apr. 12, 2017
		Cd	BL	/	/		
		Hg	BL	/	/		
		Cr(Cr(VI))	BL	/	/		
		Br(PBBs&PBDEs)	IN	/	N.D.		
		DBP	N/A	BL	/		
		BBP	N/A	BL	/		
		DEHP	N/A	BL	/		
DIBP	N/A	BL	/				

Verification Report

Report No. SCL01J022437

Page 57 of 99

Sample No.	Sample Description	Tested Items	XRF Screening Test	Phthalates Screening Test	Chemical Test (mg/kg)	Conclusion	Sample Received/ Resubmitted Date
154	Silvery metal	Pb	BL	/	/	PASS	Apr. 12, 2017
		Cd	BL	/	/		
		Hg	BL	/	/		
		Cr(Cr(VI))	BL	/	/		
		Br(PBBs&PBDEs)	N/A	/	/		
		DBP	N/A	/	/		
		BBP	N/A	/	/		
		DEHP	N/A	/	/		
155	Red plastic	Pb	BL	/	/	PASS	Apr. 12, 2017/ May 27, 2017
		Cd	BL	/	/		
		Hg	BL	/	/		
		Cr(Cr(VI))	BL	/	/		
		Br(PBBs&PBDEs)	BL	/	/		
		DBP	N/A	BL	/		
		BBP	N/A	BL	/		
		DEHP	N/A	BL	/		
156	Golden metal	Pb	BL	/	/	PASS	Apr. 12, 2017
		Cd	BL	/	/		
		Hg	BL	/	/		
		Cr(Cr(VI))	BL	/	/		
		Br(PBBs&PBDEs)	N/A	/	/		
		DBP	N/A	/	/		
		BBP	N/A	/	/		
		DEHP	N/A	/	/		
DIBP	N/A	/	/				

Verification Report

Report No. SCL01J022437

Page 58 of 99

Sample No.	Sample Description	Tested Items	XRF Screening Test	Phthalates Screening Test	Chemical Test (mg/kg)	Conclusion	Sample Received/ Resubmitted Date
157	Golden metal	Pb	BL	/	/	PASS	Apr. 12, 2017
		Cd	BL	/	/		
		Hg	BL	/	/		
		Cr(Cr(VI))	BL	/	/		
		Br(PBBs&PBDEs)	N/A	/	/		
		DBP	N/A	/	/		
		BBP	N/A	/	/		
		DEHP	N/A	/	/		
		DIBP	N/A	/	/		
158	Metal with golden plating	Pb	IN	/	26360 ^{#2}	PASS	Apr. 12, 2017
		Cd	BL	/	/		
		Hg	BL	/	/		
		Cr(Cr(VI))	N/A	/	N.D. ▼		
		Br(PBBs&PBDEs)	N/A	/	/		
		DBP	N/A	/	/		
		BBP	N/A	/	/		
		DEHP	N/A	/	/		
		DIBP	N/A	/	/		
159	Black plastic with gray printing	Pb	BL	/	/	PASS	Apr. 12, 2017
		Cd	BL	/	/		
		Hg	BL	/	/		
		Cr(Cr(VI))	BL	/	/		
		Br(PBBs&PBDEs)	BL	/	/		
		DBP	N/A	BL	/		
		BBP	N/A	BL	/		
		DEHP	N/A	BL	/		
		DIBP	N/A	BL	/		

Verification Report

Report No. SCL01J022437

Page 59 of 99

Sample No.	Sample Description	Tested Items	XRF Screening Test	Phthalates Screening Test	Chemical Test (mg/kg)	Conclusion	Sample Received/ Resubmitted Date
160	Silvery metal solder	Pb	BL	/	/	PASS	Apr. 12, 2017/ Jul. 11, 2017
		Cd	BL	/	/		
		Hg	BL	/	/		
		Cr(Cr(VI))	BL	/	/		
		Br(PBBs&PBDEs)	N/A	/	/		
		DBP	N/A	/	/		
		BBP	N/A	/	/		
		DEHP	N/A	/	/		
		DIBP	N/A	/	/		
161	Gray wire jacket	Pb	BL	/	/	PASS	Apr. 12, 2017
		Cd	BL	/	/		
		Hg	BL	/	/		
		Cr(Cr(VI))	BL	/	/		
		Br(PBBs&PBDEs)	BL	/	/		
		DBP	N/A	BL	/		
		BBP	N/A	BL	/		
		DEHP	N/A	BL	/		
		DIBP	N/A	BL	/		
162	Semi-transparent plastic	Pb	BL	/	/	PASS	Apr. 12, 2017
		Cd	BL	/	/		
		Hg	BL	/	/		
		Cr(Cr(VI))	BL	/	/		
		Br(PBBs&PBDEs)	BL	/	/		
		DBP	N/A	BL	/		
		BBP	N/A	BL	/		
		DEHP	N/A	BL	/		
		DIBP	N/A	BL	/		

Verification Report

Report No. SCL01J022437

Page 60 of 99

Sample No.	Sample Description	Tested Items	XRF Screening Test	Phthalates Screening Test	Chemical Test (mg/kg)	Conclusion	Sample Received/ Resubmitted Date
163	Silvery metal net	Pb	BL	/	/	PASS	Apr. 12, 2017
		Cd	BL	/	/		
		Hg	BL	/	/		
		Cr(Cr(VI))	BL	/	/		
		Br(PBBs&PBDEs)	N/A	/	/		
		DBP	N/A	/	/		
		BBP	N/A	/	/		
		DEHP	N/A	/	/		
		DIBP	N/A	/	/		
164	Silvery metal wire	Pb	BL	/	/	PASS	Apr. 12, 2017
		Cd	BL	/	/		
		Hg	BL	/	/		
		Cr(Cr(VI))	BL	/	/		
		Br(PBBs&PBDEs)	N/A	/	/		
		DBP	N/A	/	/		
		BBP	N/A	/	/		
		DEHP	N/A	/	/		
		DIBP	N/A	/	/		
165	Golden metal	Pb	BL	/	/	PASS	Apr. 12, 2017
		Cd	BL	/	/		
		Hg	BL	/	/		
		Cr(Cr(VI))	BL	/	/		
		Br(PBBs&PBDEs)	N/A	/	/		
		DBP	N/A	/	/		
		BBP	N/A	/	/		
		DEHP	N/A	/	/		
		DIBP	N/A	/	/		

Verification Report

Report No. SCL01J022437

Page 61 of 99

Sample No.	Sample Description	Tested Items	XRF Screening Test	Phthalates Screening Test	Chemical Test (mg/kg)	Conclusion	Sample Received/ Resubmitted Date
166	Black plastic	Pb	BL	/	/	PASS	Apr. 12, 2017
		Cd	BL	/	/		
		Hg	BL	/	/		
		Cr(Cr(VI))	BL	/	/		
		Br(PBBs&PBDEs)	BL	/	/		
		DBP	N/A	BL	/		
		BBP	N/A	BL	/		
		DEHP	N/A	BL	/		
167	Metal with golden plating	Pb	OL	/	24975 #2	PASS	Apr. 12, 2017
		Cd	BL	/	/		
		Hg	BL	/	/		
		Cr(Cr(VI))	N/A	/	N.D. ▼		
		Br(PBBs&PBDEs)	N/A	/	/		
		DBP	N/A	/	/		
		BBP	N/A	/	/		
		DEHP	N/A	/	/		
168	White plastic	Pb	BL	/	/	PASS	Apr. 12, 2017
		Cd	BL	/	/		
		Hg	BL	/	/		
		Cr(Cr(VI))	BL	/	/		
		Br(PBBs&PBDEs)	BL	/	/		
		DBP	N/A	BL	/		
		BBP	N/A	BL	/		
		DEHP	N/A	BL	/		
DIBP	N/A	BL	/				

Verification Report

Report No. SCL01J022437

Page 62 of 99

Sample No.	Sample Description	Tested Items	XRF Screening Test	Phthalates Screening Test	Chemical Test (mg/kg)	Conclusion	Sample Received/ Resubmitted Date
169	Golden metal axle	Pb	BL	/	/	PASS	Apr. 12, 2017
		Cd	BL	/	/		
		Hg	BL	/	/		
		Cr(Cr(VI))	BL	/	/		
		Br(PBBs&PBDEs)	N/A	/	/		
		DBP	N/A	/	/		
		BBP	N/A	/	/		
		DEHP	N/A	/	/		
		DIBP	N/A	/	/		
170	Golden metal	Pb	BL	/	/	PASS	Apr. 12, 2017
		Cd	BL	/	/		
		Hg	BL	/	/		
		Cr(Cr(VI))	BL	/	/		
		Br(PBBs&PBDEs)	N/A	/	/		
		DBP	N/A	/	/		
		BBP	N/A	/	/		
		DEHP	N/A	/	/		
		DIBP	N/A	/	/		
171	Beige plastic with black printing	Pb	BL	/	/	PASS	Apr. 12, 2017
		Cd	BL	/	/		
		Hg	BL	/	/		
		Cr(Cr(VI))	BL	/	/		
		Br(PBBs&PBDEs)	BL	/	/		
		DBP	N/A	BL	/		
		BBP	N/A	BL	/		
		DEHP	N/A	BL	/		
		DIBP	N/A	BL	/		

Verification Report

Report No. SCL01J022437

Page 63 of 99

Sample No.	Sample Description	Tested Items	XRF Screening Test	Phthalates Screening Test	Chemical Test (mg/kg)	Conclusion	Sample Received/ Resubmitted Date
172	Silvery metal	Pb	BL	/	/	PASS	Apr. 12, 2017
		Cd	BL	/	/		
		Hg	BL	/	/		
		Cr(Cr(VI))	BL	/	/		
		Br(PBBs&PBDEs)	N/A	/	/		
		DBP	N/A	/	/		
		BBP	N/A	/	/		
		DEHP	N/A	/	/		
173	Brown capacitance (Tested as a whole)	Pb	BL	/	/	PASS	Apr. 12, 2017
		Cd	BL	/	/		
		Hg	BL	/	/		
		Cr(Cr(VI))	BL	/	/		
		Br(PBBs&PBDEs)	BL	/	/		
		DBP	N/A	BL	/		
		BBP	N/A	BL	/		
		DEHP	N/A	BL	/		
174	Black body (Tested as a whole)	Pb	$1.8 \times 10^{4 \#4}$	/	/	PASS	Apr. 12, 2017
		Cd	BL	/	/		
		Hg	BL	/	/		
		Cr(Cr(VI))	BL	/	/		
		Br(PBBs&PBDEs)	BL	/	/		
		DBP	N/A	BL	/		
		BBP	N/A	BL	/		
		DEHP	N/A	BL	/		
DIBP	N/A	BL	/				

Verification Report

Report No. SCL01J022437

Page 64 of 99

Sample No.	Sample Description	Tested Items	XRF Screening Test	Phthalates Screening Test	Chemical Test (mg/kg)	Conclusion	Sample Received/ Resubmitted Date
175	Silvery metal	Pb	BL	/	/	PASS	Apr. 12, 2017
		Cd	BL	/	/		
		Hg	BL	/	/		
		Cr(Cr(VI))	BL	/	/		
		Br(PBBs&PBDEs)	N/A	/	/		
		DBP	N/A	/	/		
		BBP	N/A	/	/		
		DEHP	N/A	/	/		
176	Brown-gray capacitance (Tested as a whole)	Pb	BL	/	/	PASS	Apr. 12, 2017
		Cd	BL	/	/		
		Hg	BL	/	/		
		Cr(Cr(VI))	BL	/	/		
		Br(PBBs&PBDEs)	BL	/	/		
		DBP	N/A	BL	/		
		BBP	N/A	BL	/		
		DEHP	N/A	BL	/		
177	Light brown capacitance (Tested as a whole)	Pb	BL	/	/	PASS	Apr. 12, 2017
		Cd	BL	/	/		
		Hg	BL	/	/		
		Cr(Cr(VI))	BL	/	/		
		Br(PBBs&PBDEs)	BL	/	/		
		DBP	N/A	BL	/		
		BBP	N/A	BL	/		
		DEHP	N/A	BL	/		
DIBP	N/A	BL	/				

Verification Report

Report No. SCL01J022437

Page 65 of 99

Sample No.	Sample Description	Tested Items	XRF Screening Test	Phthalates Screening Test	Chemical Test (mg/kg)	Conclusion	Sample Received/ Resubmitted Date
178	Black body (Tested as a whole)	Pb	BL	/	/	PASS	Apr. 12, 2017
		Cd	BL	/	/		
		Hg	BL	/	/		
		Cr(Cr(VI))	BL	/	/		
		Br(PBBs&PBDEs)	BL	/	/		
		DBP	N/A	BL	/		
		BBP	N/A	BL	/		
		DEHP	N/A	BL	/		
		DIBP	N/A	BL	/		
179	Silvery metal	Pb	BL	/	/	PASS	Apr. 12, 2017
		Cd	BL	/	/		
		Hg	BL	/	/		
		Cr(Cr(VI))	BL	/	/		
		Br(PBBs&PBDEs)	N/A	/	/		
		DBP	N/A	/	/		
		BBP	N/A	/	/		
		DEHP	N/A	/	/		
		DIBP	N/A	/	/		
180	Semi-transparent plastic	Pb	BL	/	/	PASS	Apr. 12, 2017
		Cd	BL	/	/		
		Hg	BL	/	/		
		Cr(Cr(VI))	BL	/	/		
		Br(PBBs&PBDEs)	BL	/	/		
		DBP	N/A	BL	/		
		BBP	N/A	BL	/		
		DEHP	N/A	BL	/		
		DIBP	N/A	BL	/		

Verification Report

Report No. SCL01J022437

Page 66 of 99

Sample No.	Sample Description	Tested Items	XRF Screening Test	Phthalates Screening Test	Chemical Test (mg/kg)	Conclusion	Sample Received/ Resubmitted Date
181	Red body (Tested as a whole)	Pb	BL	/	/	PASS	Apr. 12, 2017
		Cd	BL	/	/		
		Hg	BL	/	/		
		Cr(Cr(VI))	BL	/	/		
		Br(PBBs&PBDEs)	BL	/	/		
		DBP	N/A	BL	/		
		BBP	N/A	BL	/		
		DEHP	N/A	BL	/		
		DIBP	N/A	BL	/		
182	Silvery metal	Pb	BL	/	/	PASS	Apr. 12, 2017
		Cd	BL	/	/		
		Hg	BL	/	/		
		Cr(Cr(VI))	BL	/	/		
		Br(PBBs&PBDEs)	N/A	/	/		
		DBP	N/A	/	/		
		BBP	N/A	/	/		
		DEHP	N/A	/	/		
		DIBP	N/A	/	/		
183	Beige plastic with brown printing	Pb	BL	/	/	PASS	Apr. 12, 2017
		Cd	BL	/	/		
		Hg	BL	/	/		
		Cr(Cr(VI))	BL	/	/		
		Br(PBBs&PBDEs)	BL	/	/		
		DBP	N/A	BL	/		
		BBP	N/A	BL	/		
		DEHP	N/A	BL	/		
		DIBP	N/A	BL	/		

Verification Report

Report No. SCL01J022437

Page 67 of 99

Sample No.	Sample Description	Tested Items	XRF Screening Test	Phthalates Screening Test	Chemical Test (mg/kg)	Conclusion	Sample Received/ Resubmitted Date
184	Black glue	Pb	BL	/	/	PASS	Apr. 12, 2017
		Cd	BL	/	/		
		Hg	BL	/	/		
		Cr(Cr(VI))	BL	/	/		
		Br(PBBs&PBDEs)	BL	/	/		
		DBP	N/A	BL	/		
		BBP	N/A	BL	/		
		DEHP	N/A	BL	/		
		DIBP	N/A	BL	/		
185	Deep gray magnet	Pb	BL	/	/	PASS	Apr. 12, 2017
		Cd	BL	/	/		
		Hg	BL	/	/		
		Cr(Cr(VI))	BL	/	/		
		Br(PBBs&PBDEs)	N/A	/	/		
		DBP	N/A	/	/		
		BBP	N/A	/	/		
		DEHP	N/A	/	/		
		DIBP	N/A	/	/		
186	Red enamelled wire	Pb	BL	/	/	PASS	Apr. 12, 2017
		Cd	BL	/	/		
		Hg	BL	/	/		
		Cr(Cr(VI))	BL	/	/		
		Br(PBBs&PBDEs)	BL	/	/		
		DBP	N/A	BL	/		
		BBP	N/A	BL	/		
		DEHP	N/A	BL	/		
		DIBP	N/A	BL	/		

Verification Report

Report No. SCL01J022437

Page 68 of 99

Sample No.	Sample Description	Tested Items	XRF Screening Test	Phthalates Screening Test	Chemical Test (mg/kg)	Conclusion	Sample Received/ Resubmitted Date
187	Cupreous enamelled wire	Pb	BL	/	/	PASS	Apr. 12, 2017
		Cd	BL	/	/		
		Hg	BL	/	/		
		Cr(Cr(VI))	BL	/	/		
		Br(PBBs&PBDEs)	BL	/	/		
		DBP	N/A	BL	/		
		BBP	N/A	BL	/		
		DEHP	N/A	BL	/		
		DIBP	N/A	BL	/		
188	Silvery metal	Pb	BL	/	/	PASS	Apr. 12, 2017
		Cd	BL	/	/		
		Hg	BL	/	/		
		Cr(Cr(VI))	BL	/	/		
		Br(PBBs&PBDEs)	N/A	/	/		
		DBP	N/A	/	/		
		BBP	N/A	/	/		
		DEHP	N/A	/	/		
		DIBP	N/A	/	/		
189	Black audion (Tested as a whole)	Pb	BL	/	/	PASS	Apr. 12, 2017
		Cd	BL	/	/		
		Hg	BL	/	/		
		Cr(Cr(VI))	BL	/	/		
		Br(PBBs&PBDEs)	BL	/	/		
		DBP	N/A	BL	/		
		BBP	N/A	BL	/		
		DEHP	N/A	BL	/		
		DIBP	N/A	BL	/		

Verification Report

Report No. SCL01J022437

Page 69 of 99

Sample No.	Sample Description	Tested Items	XRF Screening Test	Phthalates Screening Test	Chemical Test (mg/kg)	Conclusion	Sample Received/ Resubmitted Date
190	Blue body (Tested as a whole)	Pb	BL	/	/	PASS	Apr. 12, 2017
		Cd	BL	/	/		
		Hg	BL	/	/		
		Cr(Cr(VI))	BL	/	/		
		Br(PBBs&PBDEs)	BL	/	/		
		DBP	N/A	BL	/		
		BBP	N/A	BL	/		
		DEHP	N/A	BL	/		
		DIBP	N/A	BL	/		
191	Silvery metal	Pb	BL	/	/	PASS	Apr. 12, 2017
		Cd	BL	/	/		
		Hg	BL	/	/		
		Cr(Cr(VI))	BL	/	/		
		Br(PBBs&PBDEs)	N/A	/	/		
		DBP	N/A	/	/		
		BBP	N/A	/	/		
		DEHP	N/A	/	/		
		DIBP	N/A	/	/		
192	Black plastic with gray printing	Pb	BL	/	/	PASS	Apr. 12, 2017
		Cd	BL	/	/		
		Hg	BL	/	/		
		Cr(Cr(VI))	BL	/	/		
		Br(PBBs&PBDEs)	BL	/	/		
		DBP	N/A	BL	/		
		BBP	N/A	BL	/		
		DEHP	N/A	BL	/		
		DIBP	N/A	BL	/		

Verification Report

Report No. SCL01J022437

Page 70 of 99

Sample No.	Sample Description	Tested Items	XRF Screening Test	Phthalates Screening Test	Chemical Test (mg/kg)	Conclusion	Sample Received/ Resubmitted Date
193	Gray glue	Pb	BL	/	/	PASS	Apr. 12, 2017
		Cd	BL	/	/		
		Hg	BL	/	/		
		Cr(Cr(VI))	BL	/	/		
		Br(PBBs&PBDEs)	BL	/	/		
		DBP	N/A	BL	/		
		BBP	N/A	BL	/		
		DEHP	N/A	BL	/		
		DIBP	N/A	BL	/		
194	Black plastic	Pb	BL	/	/	PASS	Apr. 12, 2017
		Cd	BL	/	/		
		Hg	BL	/	/		
		Cr(Cr(VI))	BL	/	/		
		Br(PBBs&PBDEs)	BL	/	/		
		DBP	N/A	BL	/		
		BBP	N/A	BL	/		
		DEHP	N/A	BL	/		
		DIBP	N/A	BL	/		
195	PCB (Tested as a whole)	Pb	BL	/	/	PASS	Apr. 12, 2017
		Cd	BL	/	/		
		Hg	BL	/	/		
		Cr(Cr(VI))	BL	/	/		
		Br(PBBs&PBDEs)	BL	/	/		
		DBP	N/A	BL	/		
		BBP	N/A	BL	/		
		DEHP	N/A	BL	/		
		DIBP	N/A	BL	/		

Verification Report

Report No. SCL01J022437

Page 71 of 99

Sample No.	Sample Description	Tested Items	XRF Screening Test	Phthalates Screening Test	Chemical Test (mg/kg)	Conclusion	Sample Received/ Resubmitted Date
196	Silvery metal	Pb	BL	/	/	PASS	Apr. 12, 2017
		Cd	BL	/	/		
		Hg	BL	/	/		
		Cr(Cr(VI))	BL	/	/		
		Br(PBBs&PBDEs)	N/A	/	/		
		DBP	N/A	/	/		
		BBP	N/A	/	/		
		DEHP	N/A	/	/		
		DIBP	N/A	/	/		
197	Black body (Tested as a whole)	Pb	BL	/	/	PASS	Apr. 12, 2017
		Cd	BL	/	/		
		Hg	BL	/	/		
		Cr(Cr(VI))	BL	/	/		
		Br(PBBs&PBDEs)	BL	/	/		
		DBP	N/A	BL	/		
		BBP	N/A	BL	/		
		DEHP	N/A	BL	/		
		DIBP	N/A	BL	/		
198	Silvery metal	Pb	BL	/	/	PASS	Apr. 12, 2017
		Cd	BL	/	/		
		Hg	BL	/	/		
		Cr(Cr(VI))	BL	/	/		
		Br(PBBs&PBDEs)	N/A	/	/		
		DBP	N/A	/	/		
		BBP	N/A	/	/		
		DEHP	N/A	/	/		
		DIBP	N/A	/	/		

Verification Report

Report No. SCL01J022437

Page 72 of 99

Sample No.	Sample Description	Tested Items	XRF Screening Test	Phthalates Screening Test	Chemical Test (mg/kg)	Conclusion	Sample Received/ Resubmitted Date
199	Brown capacitance (Tested as a whole)	Pb	BL	/	/	PASS	Apr. 12, 2017
		Cd	BL	/	/		
		Hg	BL	/	/		
		Cr(Cr(VI))	BL	/	/		
		Br(PBBs&PBDEs)	BL	/	/		
		DBP	N/A	BL	/		
		BBP	N/A	BL	/		
		DEHP	N/A	BL	/		
		DIBP	N/A	BL	/		
200	Black body (Tested as a whole)	Pb	BL	/	/	PASS	Apr. 12, 2017
		Cd	BL	/	/		
		Hg	BL	/	/		
		Cr(Cr(VI))	BL	/	/		
		Br(PBBs&PBDEs)	BL	/	/		
		DBP	N/A	BL	/		
		BBP	N/A	BL	/		
		DEHP	N/A	BL	/		
		DIBP	N/A	BL	/		
201	Silvery metal	Pb	BL	/	/	PASS	Apr. 12, 2017
		Cd	BL	/	/		
		Hg	BL	/	/		
		Cr(Cr(VI))	BL	/	/		
		Br(PBBs&PBDEs)	N/A	/	/		
		DBP	N/A	/	/		
		BBP	N/A	/	/		
		DEHP	N/A	/	/		
		DIBP	N/A	/	/		

Verification Report

Report No. SCL01J022437

Page 73 of 99

Sample No.	Sample Description	Tested Items	XRF Screening Test	Phthalates Screening Test	Chemical Test (mg/kg)	Conclusion	Sample Received/ Resubmitted Date
202	Black resistance (Tested as a whole)	Pb	BL	/	/	PASS	Apr. 12, 2017
		Cd	BL	/	/		
		Hg	BL	/	/		
		Cr(Cr(VI))	BL	/	/		
		Br(PBBs&PBDEs)	BL	/	/		
		DBP	N/A	BL	/		
		BBP	N/A	BL	/		
		DEHP	N/A	BL	/		
		DIBP	N/A	BL	/		
203	Black body (Tested as a whole)	Pb	BL	/	/	PASS	Apr. 12, 2017
		Cd	BL	/	/		
		Hg	BL	/	/		
		Cr(Cr(VI))	BL	/	/		
		Br(PBBs&PBDEs)	BL	/	/		
		DBP	N/A	BL	/		
		BBP	N/A	BL	/		
		DEHP	N/A	BL	/		
		DIBP	N/A	BL	/		
204	Silvery metal	Pb	BL	/	/	PASS	Apr. 12, 2017
		Cd	BL	/	/		
		Hg	BL	/	/		
		Cr(Cr(VI))	BL	/	/		
		Br(PBBs&PBDEs)	N/A	/	/		
		DBP	N/A	/	/		
		BBP	N/A	/	/		
		DEHP	N/A	/	/		
		DIBP	N/A	/	/		

Verification Report

Report No. SCL01J022437

Page 74 of 99

Sample No.	Sample Description	Tested Items	XRF Screening Test	Phthalates Screening Test	Chemical Test (mg/kg)	Conclusion	Sample Received/ Resubmitted Date
205	Brown capacitance (Tested as a whole)	Pb	BL	/	/	PASS	Apr. 12, 2017
		Cd	BL	/	/		
		Hg	BL	/	/		
		Cr(Cr(VI))	BL	/	/		
		Br(PBBs&PBDEs)	BL	/	/		
		DBP	N/A	BL	/		
		BBP	N/A	BL	/		
		DEHP	N/A	BL	/		
		DIBP	N/A	BL	/		
206	Black body (Tested as a whole)	Pb	BL	/	/	PASS	Apr. 12, 2017
		Cd	BL	/	/		
		Hg	BL	/	/		
		Cr(Cr(VI))	BL	/	/		
		Br(PBBs&PBDEs)	BL	/	/		
		DBP	N/A	BL	/		
		BBP	N/A	BL	/		
		DEHP	N/A	BL	/		
		DIBP	N/A	BL	/		
207	Silvery metal	Pb	BL	/	/	PASS	Apr. 12, 2017
		Cd	BL	/	/		
		Hg	BL	/	/		
		Cr(Cr(VI))	BL	/	/		
		Br(PBBs&PBDEs)	N/A	/	/		
		DBP	N/A	/	/		
		BBP	N/A	/	/		
		DEHP	N/A	/	/		
		DIBP	N/A	/	/		

Verification Report

Report No. SCL01J022437

Page 75 of 99

Sample No.	Sample Description	Tested Items	XRF Screening Test	Phthalates Screening Test	Chemical Test (mg/kg)	Conclusion	Sample Received/ Resubmitted Date
208	Black body (Tested as a whole)	Pb	BL	/	/	PASS	Apr. 12, 2017
		Cd	BL	/	/		
		Hg	BL	/	/		
		Cr(Cr(VI))	BL	/	/		
		Br(PBBs&PBDEs)	BL	/	/		
		DBP	N/A	BL	/		
		BBP	N/A	BL	/		
		DEHP	N/A	BL	/		
		DIBP	N/A	BL	/		
209	Silvery metal	Pb	BL	/	/	PASS	Apr. 12, 2017
		Cd	BL	/	/		
		Hg	BL	/	/		
		Cr(Cr(VI))	BL	/	/		
		Br(PBBs&PBDEs)	N/A	/	/		
		DBP	N/A	/	/		
		BBP	N/A	/	/		
		DEHP	N/A	/	/		
		DIBP	N/A	/	/		
210	Purple enamelled wire	Pb	BL	/	/	PASS	Apr. 12, 2017
		Cd	BL	/	/		
		Hg	BL	/	/		
		Cr(Cr(VI))	BL	/	/		
		Br(PBBs&PBDEs)	BL	/	/		
		DBP	N/A	BL	/		
		BBP	N/A	BL	/		
		DEHP	N/A	BL	/		
		DIBP	N/A	BL	/		

Verification Report

Report No. SCL01J022437

Page 76 of 99

Sample No.	Sample Description	Tested Items	XRF Screening Test	Phthalates Screening Test	Chemical Test (mg/kg)	Conclusion	Sample Received/ Resubmitted Date
211	Brown enamelled wire	Pb	BL	/	/	PASS	Apr. 12, 2017
		Cd	BL	/	/		
		Hg	BL	/	/		
		Cr(Cr(VI))	BL	/	/		
		Br(PBBs&PBDEs)	BL	/	/		
		DBP	N/A	BL	/		
		BBP	N/A	BL	/		
		DEHP	N/A	BL	/		
		DIBP	N/A	BL	/		
212	Red enamelled wire	Pb	BL	/	/	PASS	Apr. 12, 2017
		Cd	BL	/	/		
		Hg	BL	/	/		
		Cr(Cr(VI))	BL	/	/		
		Br(PBBs&PBDEs)	BL	/	/		
		DBP	N/A	BL	/		
		BBP	N/A	BL	/		
		DEHP	N/A	BL	/		
		DIBP	N/A	BL	/		
213	Green enamelled wire	Pb	BL	/	/	PASS	Apr. 12, 2017
		Cd	BL	/	/		
		Hg	BL	/	/		
		Cr(Cr(VI))	BL	/	/		
		Br(PBBs&PBDEs)	BL	/	/		
		DBP	N/A	BL	/		
		BBP	N/A	BL	/		
		DEHP	N/A	BL	/		
		DIBP	N/A	BL	/		

Verification Report

Report No. SCL01J022437

Page 77 of 99

Sample No.	Sample Description	Tested Items	XRF Screening Test	Phthalates Screening Test	Chemical Test (mg/kg)	Conclusion	Sample Received/ Resubmitted Date
214	Blue enamelled wire	Pb	BL	/	/	PASS	Apr. 12, 2017
		Cd	BL	/	/		
		Hg	BL	/	/		
		Cr(Cr(VI))	BL	/	/		
		Br(PBBs&PBDEs)	BL	/	/		
		DBP	N/A	BL	/		
		BBP	N/A	BL	/		
		DEHP	N/A	BL	/		
		DIBP	N/A	BL	/		
215	Cupreous enamelled wire	Pb	BL	/	/	PASS	Apr. 12, 2017
		Cd	BL	/	/		
		Hg	BL	/	/		
		Cr(Cr(VI))	BL	/	/		
		Br(PBBs&PBDEs)	BL	/	/		
		DBP	N/A	BL	/		
		BBP	N/A	BL	/		
		DEHP	N/A	BL	/		
		DIBP	N/A	BL	/		
216	Deep gray magnet	Pb	BL	/	/	PASS	Apr. 12, 2017
		Cd	BL	/	/		
		Hg	BL	/	/		
		Cr(Cr(VI))	BL	/	/		
		Br(PBBs&PBDEs)	N/A	/	/		
		DBP	N/A	/	/		
		BBP	N/A	/	/		
		DEHP	N/A	/	/		
		DIBP	N/A	/	/		

Verification Report

Report No. SCL01J022437

Page 78 of 99

Sample No.	Sample Description	Tested Items	XRF Screening Test	Phthalates Screening Test	Chemical Test (mg/kg)	Conclusion	Sample Received/ Resubmitted Date
217	Black plastic	Pb	BL	/	/	PASS	Apr. 12, 2017/ May 31, 2017
		Cd	BL	/	/		
		Hg	BL	/	/		
		Cr(Cr(VI))	BL	/	/		
		Br(PBBs&PBDEs)	BL	/	/		
		DBP	N/A	BL	/		
		BBP	N/A	BL	/		
		DEHP	N/A	BL	/		
		DIBP	N/A	BL	/		
218	Transparent plastic	Pb	BL	/	/	PASS	Apr. 12, 2017/ May 31, 2017
		Cd	BL	/	/		
		Hg	BL	/	/		
		Cr(Cr(VI))	BL	/	/		
		Br(PBBs&PBDEs)	BL	/	/		
		DBP	N/A	BL	/		
		BBP	N/A	BL	/		
		DEHP	N/A	BL	/		
		DIBP	N/A	BL	/		
219	Silvery metal	Pb	BL	/	/	PASS	Apr. 12, 2017/ May 31, 2017
		Cd	BL	/	/		
		Hg	BL	/	/		
		Cr(Cr(VI))	BL	/	/		
		Br(PBBs&PBDEs)	N/A	/	/		
		DBP	N/A	/	/		
		BBP	N/A	/	/		
		DEHP	N/A	/	/		
		DIBP	N/A	/	/		

Verification Report

Report No. SCL01J022437

Page 79 of 99

Sample No.	Sample Description	Tested Items	XRF Screening Test	Phthalates Screening Test	Chemical Test (mg/kg)	Conclusion	Sample Received/ Resubmitted Date
220	Golden metal	Pb	BL	/	/	PASS	Apr. 12, 2017/ May 31, 2017
		Cd	BL	/	/		
		Hg	BL	/	/		
		Cr(Cr(VI))	BL	/	/		
		Br(PBBs&PBDEs)	N/A	/	/		
		DBP	N/A	/	/		
		BBP	N/A	/	/		
		DEHP	N/A	/	/		
221	Black plastic with gray printing	Pb	BL	/	/	PASS	Apr. 12, 2017/ May 31, 2017
		Cd	BL	/	/		
		Hg	BL	/	/		
		Cr(Cr(VI))	BL	/	/		
		Br(PBBs&PBDEs)	BL	/	/		
		DBP	N/A	BL	/		
		BBP	N/A	BL	/		
		DEHP	N/A	BL	/		
222	Transparent film	Pb	BL	/	/	PASS	Apr. 12, 2017/ May 31, 2017
		Cd	BL	/	/		
		Hg	BL	/	/		
		Cr(Cr(VI))	BL	/	/		
		Br(PBBs&PBDEs)	BL	/	/		
		DBP	N/A	BL	/		
		BBP	N/A	BL	/		
		DEHP	N/A	BL	/		
DIBP	N/A	BL	/				

Verification Report

Report No. SCL01J022437

Page 80 of 99

Sample No.	Sample Description	Tested Items	XRF Screening Test	Phthalates Screening Test	Chemical Test (mg/kg)	Conclusion	Sample Received/ Resubmitted Date
223	Silvery/light blue foil	Pb	BL	/	/	PASS	Apr. 12, 2017/ May 31, 2017
		Cd	BL	/	/		
		Hg	BL	/	/		
		Cr(Cr(VI))	BL	/	/		
		Br(PBBs&PBDEs)	BL	/	/		
		DBP	N/A	BL	/		
		BBP	N/A	BL	/		
		DEHP	N/A	BL	/		
		DIBP	N/A	BL	/		
224	Silvery metal	Pb	BL	/	/	PASS	Apr. 12, 2017/ May 31, 2017
		Cd	BL	/	/		
		Hg	BL	/	/		
		Cr(Cr(VI))	BL	/	/		
		Br(PBBs&PBDEs)	N/A	/	/		
		DBP	N/A	/	/		
		BBP	N/A	/	/		
		DEHP	N/A	/	/		
		DIBP	N/A	/	/		
225	Silvery metal	Pb	BL	/	/	PASS	Apr. 12, 2017/ May 31, 2017
		Cd	BL	/	/		
		Hg	BL	/	/		
		Cr(Cr(VI))	BL	/	/		
		Br(PBBs&PBDEs)	N/A	/	/		
		DBP	N/A	/	/		
		BBP	N/A	/	/		
		DEHP	N/A	/	/		
		DIBP	N/A	/	/		

Verification Report

Report No. SCL01J022437

Page 81 of 99

Sample No.	Sample Description	Tested Items	XRF Screening Test	Phthalates Screening Test	Chemical Test (mg/kg)	Conclusion	Sample Received/ Resubmitted Date
226	Cupreous metal	Pb	BL	/	/	PASS	Apr. 12, 2017/ May 31, 2017
		Cd	BL	/	/		
		Hg	BL	/	/		
		Cr(Cr(VI))	BL	/	/		
		Br(PBBs&PBDEs)	N/A	/	/		
		DBP	N/A	/	/		
		BBP	N/A	/	/		
		DEHP	N/A	/	/		
		DIBP	N/A	/	/		
227	Green wire jacket	Pb	BL	/	/	PASS	Apr. 12, 2017/ May 31, 2017
		Cd	BL	/	/		
		Hg	BL	/	/		
		Cr(Cr(VI))	BL	/	/		
		Br(PBBs&PBDEs)	BL	/	/		
		DBP	N/A	BL	/		
		BBP	N/A	BL	/		
		DEHP	N/A	BL	/		
		DIBP	N/A	BL	/		
228	Green/white wire jacket	Pb	BL	/	/	PASS	Apr. 12, 2017/ May 31, 2017
		Cd	BL	/	/		
		Hg	BL	/	/		
		Cr(Cr(VI))	BL	/	/		
		Br(PBBs&PBDEs)	BL	/	/		
		DBP	N/A	BL	/		
		BBP	N/A	BL	/		
		DEHP	N/A	BL	/		
		DIBP	N/A	BL	/		

Verification Report

Report No. SCL01J022437

Page 82 of 99

Sample No.	Sample Description	Tested Items	XRF Screening Test	Phthalates Screening Test	Chemical Test (mg/kg)	Conclusion	Sample Received/ Resubmitted Date
229	Orange wire jacket	Pb	BL	/	/	PASS	Apr. 12, 2017/ May 31, 2017
		Cd	BL	/	/		
		Hg	BL	/	/		
		Cr(Cr(VI))	BL	/	/		
		Br(PBBs&PBDEs)	BL	/	/		
		DBP	N/A	BL	/		
		BBP	N/A	BL	/		
		DEHP	N/A	BL	/		
		DIBP	N/A	BL	/		
230	Orange/ white wire jacket	Pb	BL	/	/	PASS	Apr. 12, 2017/ May 31, 2017
		Cd	BL	/	/		
		Hg	BL	/	/		
		Cr(Cr(VI))	BL	/	/		
		Br(PBBs&PBDEs)	BL	/	/		
		DBP	N/A	BL	/		
		BBP	N/A	BL	/		
		DEHP	N/A	BL	/		
		DIBP	N/A	BL	/		
231	Brown wire jacket	Pb	BL	/	/	PASS	Apr. 12, 2017/ May 31, 2017
		Cd	BL	/	/		
		Hg	BL	/	/		
		Cr(Cr(VI))	BL	/	/		
		Br(PBBs&PBDEs)	BL	/	/		
		DBP	N/A	BL	/		
		BBP	N/A	BL	/		
		DEHP	N/A	BL	/		
		DIBP	N/A	BL	/		

Verification Report

Report No. SCL01J022437

Page 83 of 99

Sample No.	Sample Description	Tested Items	XRF Screening Test	Phthalates Screening Test	Chemical Test (mg/kg)	Conclusion	Sample Received/ Resubmitted Date
232	Brown/ white wire jacket	Pb	BL	/	/	PASS	Apr. 12, 2017/ May 31, 2017
		Cd	BL	/	/		
		Hg	BL	/	/		
		Cr(Cr(VI))	BL	/	/		
		Br(PBBs&PBDEs)	BL	/	/		
		DBP	N/A	BL	/		
		BBP	N/A	BL	/		
		DEHP	N/A	BL	/		
		DIBP	N/A	BL	/		
233	Blue wire jacket	Pb	BL	/	/	PASS	Apr. 12, 2017/ May 31, 2017
		Cd	BL	/	/		
		Hg	BL	/	/		
		Cr(Cr(VI))	BL	/	/		
		Br(PBBs&PBDEs)	BL	/	/		
		DBP	N/A	BL	/		
		BBP	N/A	BL	/		
		DEHP	N/A	BL	/		
		DIBP	N/A	BL	/		
234	Blue/white wire jacket	Pb	BL	/	/	PASS	Apr. 12, 2017/ May 31, 2017
		Cd	BL	/	/		
		Hg	BL	/	/		
		Cr(Cr(VI))	BL	/	/		
		Br(PBBs&PBDEs)	BL	/	/		
		DBP	N/A	BL	/		
		BBP	N/A	BL	/		
		DEHP	N/A	BL	/		
		DIBP	N/A	BL	/		

Verification Report

Report No. SCL01J022437

Page 84 of 99

Remark:

- N.D. = Not Detected (<MDL or LOQ)
- MDL = Method Detection Limit
- mg/kg = ppm = parts per million
- /=Not tested
- IN= Uncertain, Further chemical test
- N/A= Not applicable
- BL = Under the screening limit
- OL = Further chemical test will be conducted while the result is above the screening limit.
- ▼The sample is negative for Cr(VI) – The Cr(VI) concentration is below 0.10 µg/cm².
The coating is considered a non-Cr(VI) based coating.
- When conducting the test for PBBs&PBDEs, XRF was introduced to screen Br Exclusively; When conducting the test for Hexavalent Chromium, XRF was introduced to screen Chromium exclusively.
- #¹ According to the client’s statement, the material of the sample(s) fall into exemption items 6(c) according to EU Directive 2011/65/EU: Copper alloy containing up to 4%(40000 mg/kg) lead by weight.
- #² The sample (metal base with plating) was tested as a whole. According to the client’s statement, content for the restricted material in the metal base of the sample(s) meet the requirement of exemption items 6(c) according to EU Directive 2011/65/EU: Copper alloy containing up to 4% (40000 mg/kg) lead by weight.
- #³ According to the client’s statement, the material of the sample(s) fall into exemption items 7(c)-I according to EU Directive 2011/65/EU: Electrical and electronic components containing lead in a glass or ceramic other than dielectric ceramic in capacitors, e.g. piezoelectronic devices, or in a glass or ceramic matrix compound.
- #⁴ According to the client’s statement, the material of the sample(s) fall into exemption items 7(a) according to EU Directive 2011/65/EU: Lead in high melting temperature type solders(i.e. lead-based alloys containing 85% by weight of more lead).
- According to the client’s statement, reference information see the following table:

Sample No.	Reference Report No.	Sample No. in Reference Report
35-36	SCL01I08865601	98-99
37	SCL01I08865601	97
39-40	SCL01I08865601	206-207

Verification Report

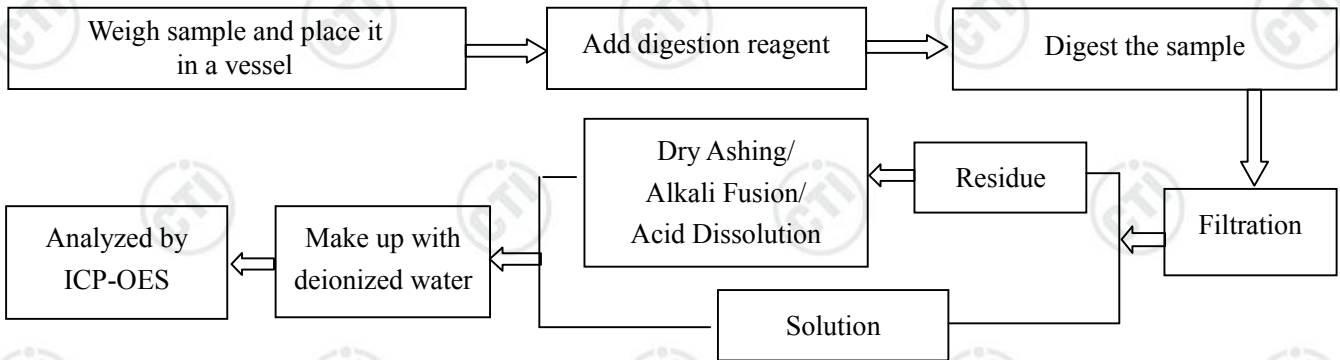
Report No. SCL01J022437

Page 85 of 99

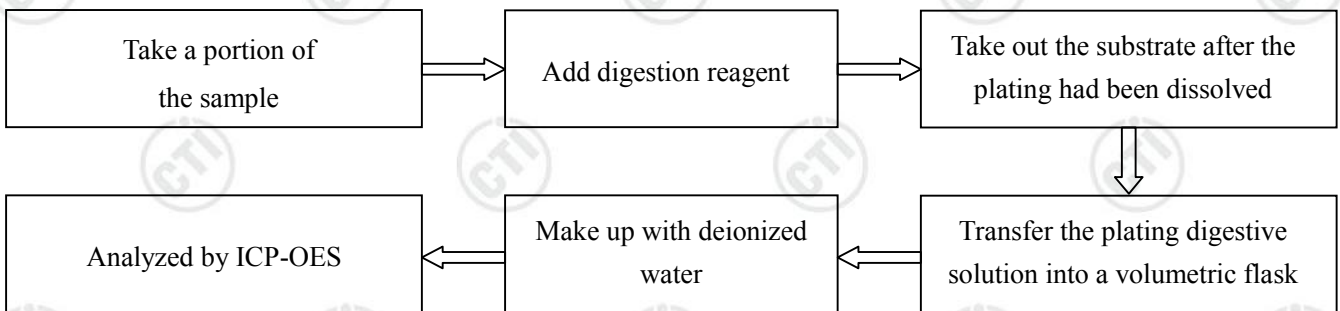
Test Process

1. Lead (Pb), Cadmium (Cd)

1) IEC 62321-5:2013 Ed.1.0

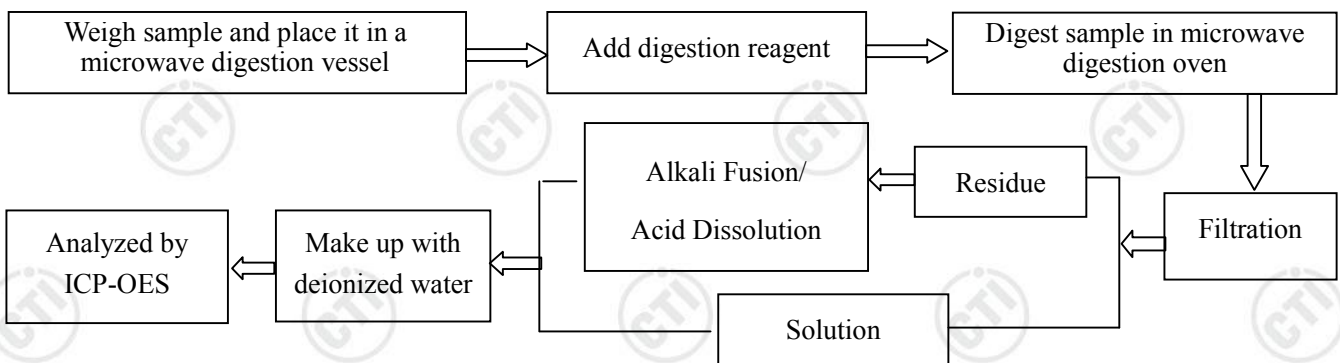


2) Refer to IEC 62321-5:2013 Ed.1.0



2. Mercury (Hg)

1) IEC 62321-4:2013 Ed.1.0

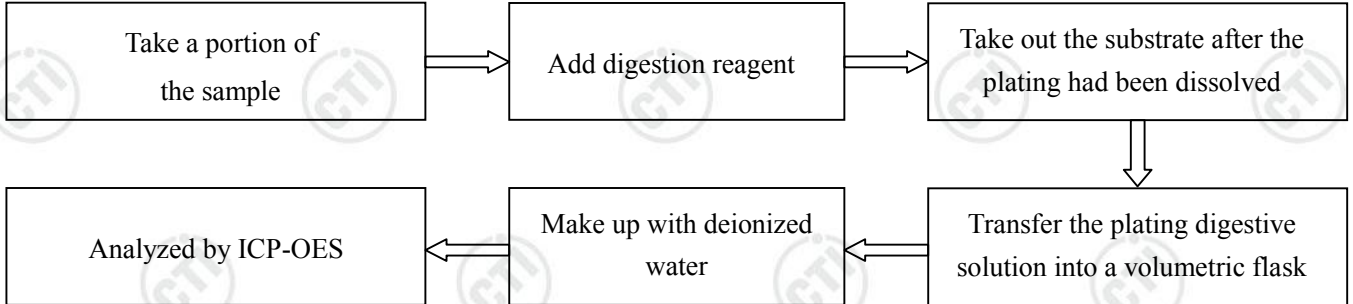


Verification Report

Report No. SCL01J022437

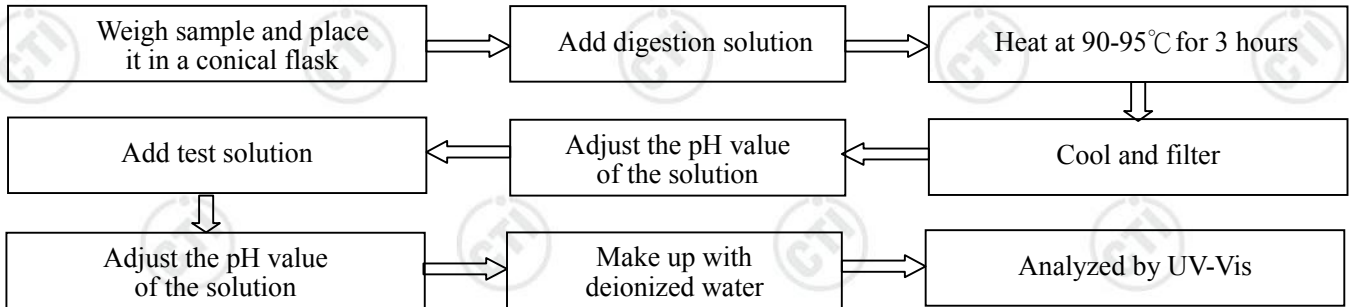
Page 86 of 99

2) Refer to IEC 62321-4:2013 Ed.1.0

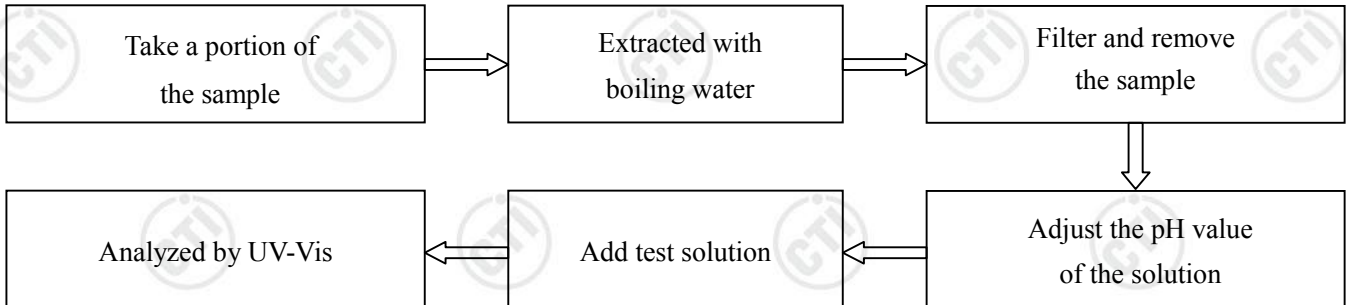


3. Hexavalent Chromium (Cr(VI))

1) Non-metal sample(s)



2) Plating/Metal sample(s)

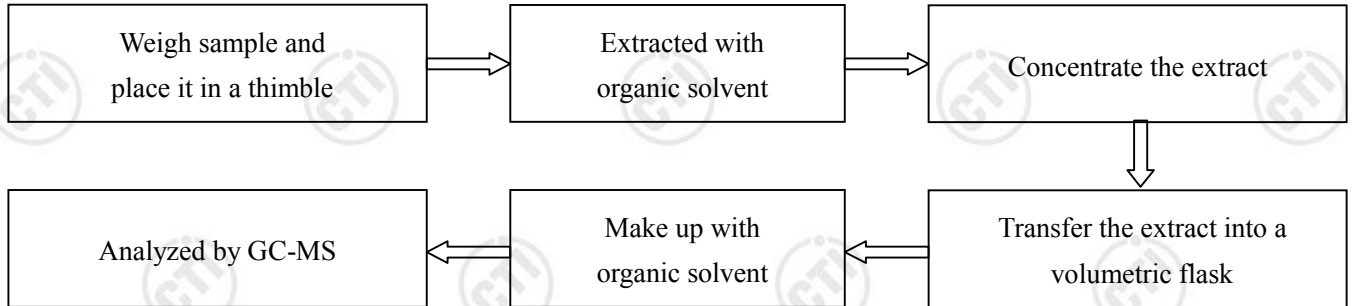


Verification Report

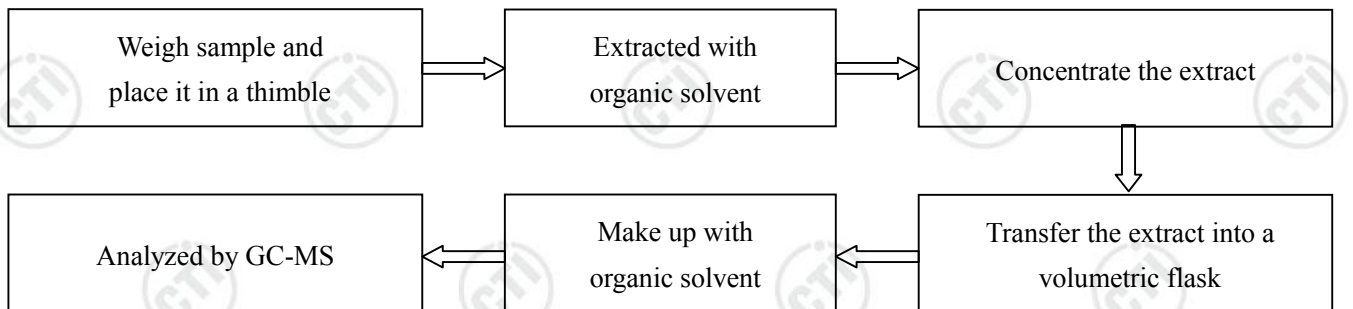
Report No. SCL01J022437

Page 87 of 99

4. Polybrominated Biphenyls(PBBs), Polybrominated Diphenyl Ethers(PBDEs)



5. Phthalates(DBP, BBP, DEHP, DIBP)

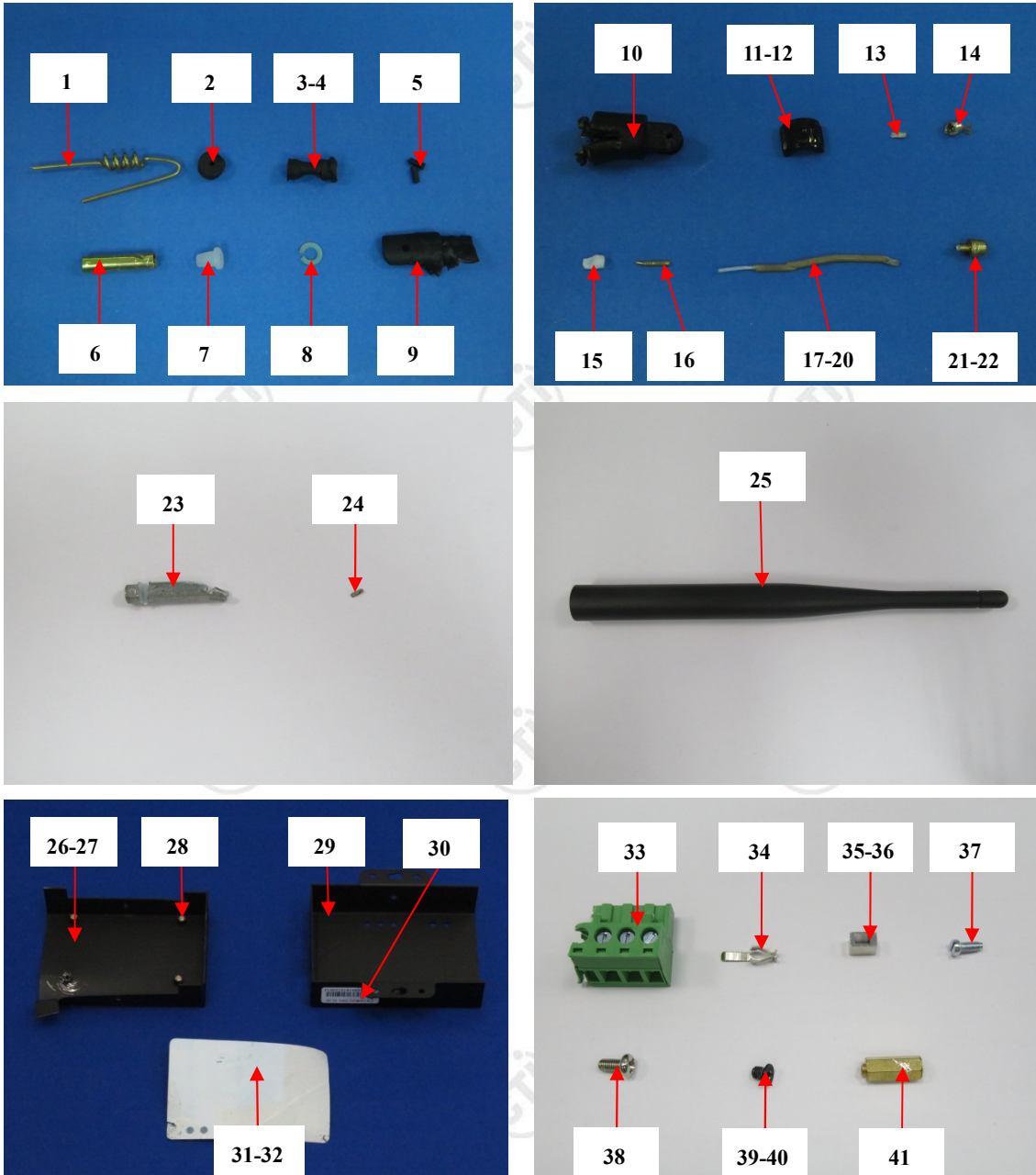


Verification Report

Report No. SCL01J022437

Page 88 of 99

Photo(s) of the tested component(s)

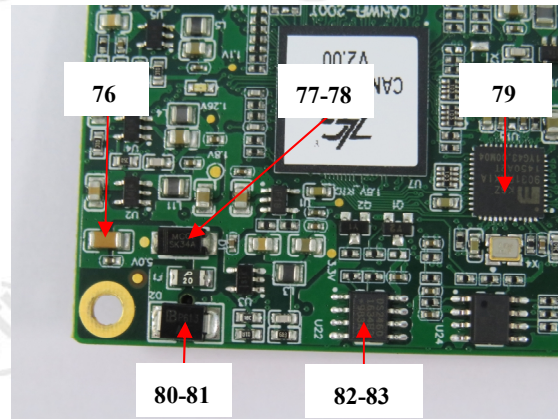
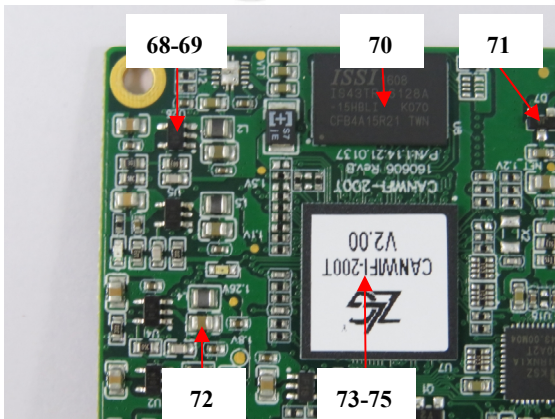
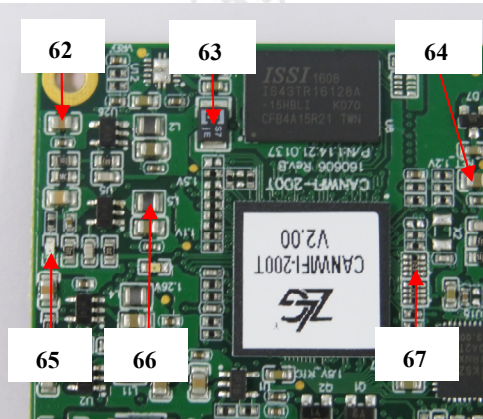
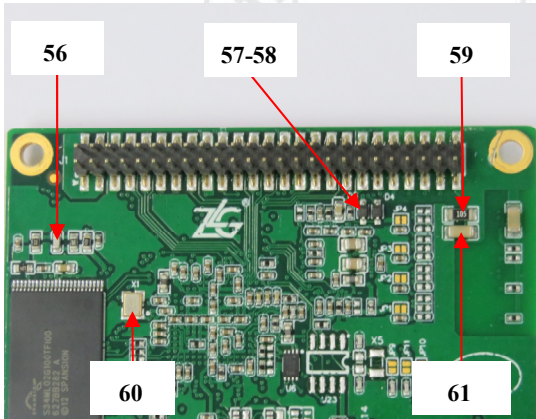
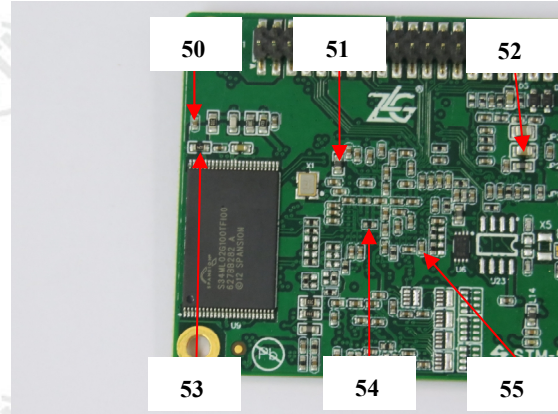
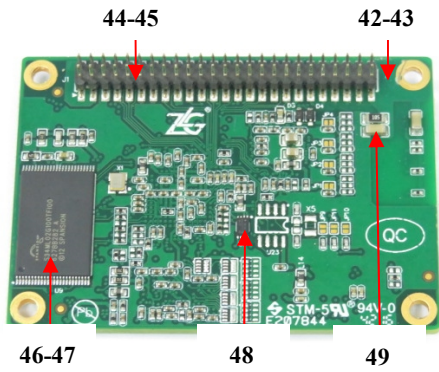


Verification Report

Report No. SCL01J022437

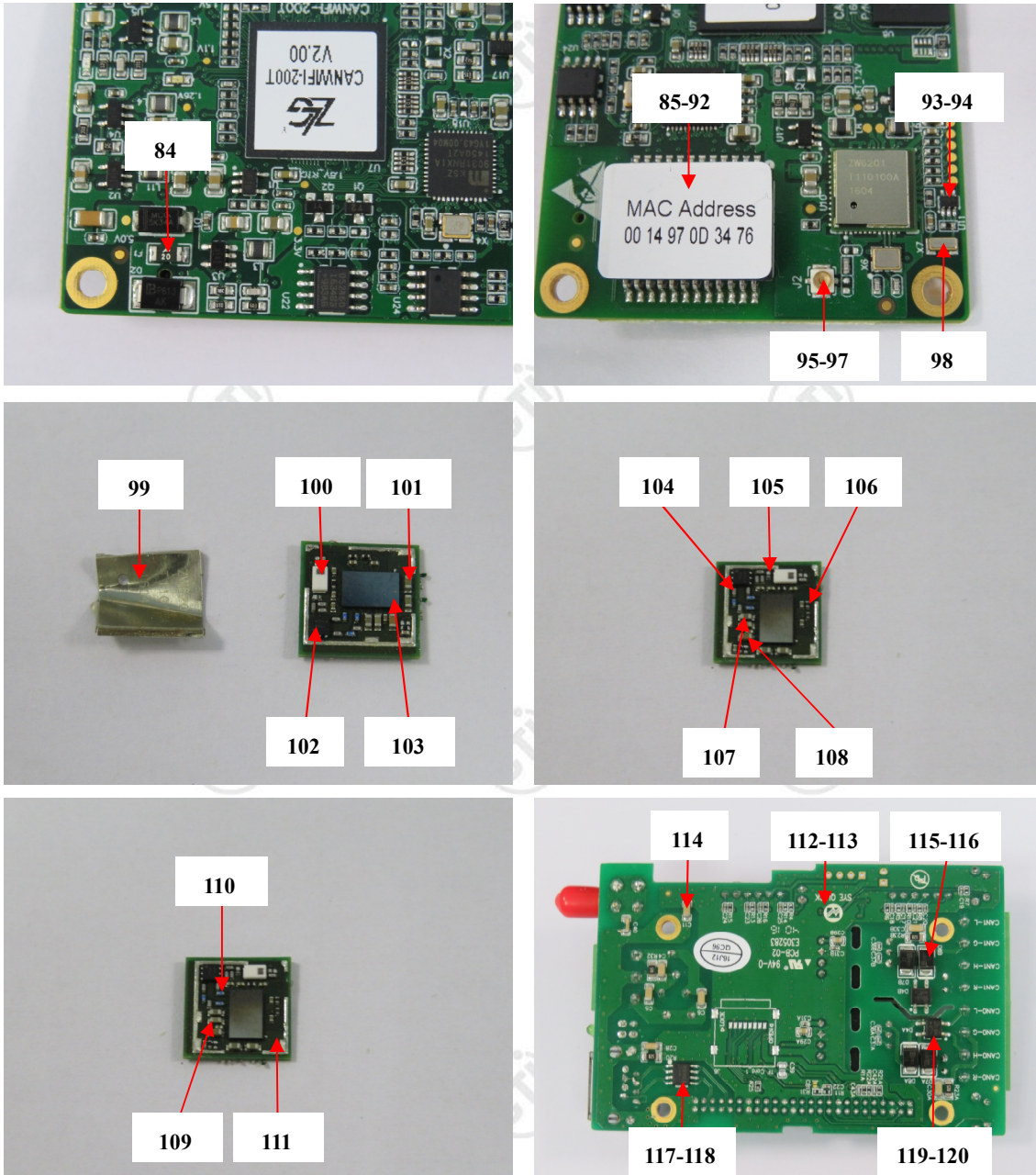
Page 89 of 99

Photo(s) of the tested component(s)



Verification Report

Photo(s) of the tested component(s)

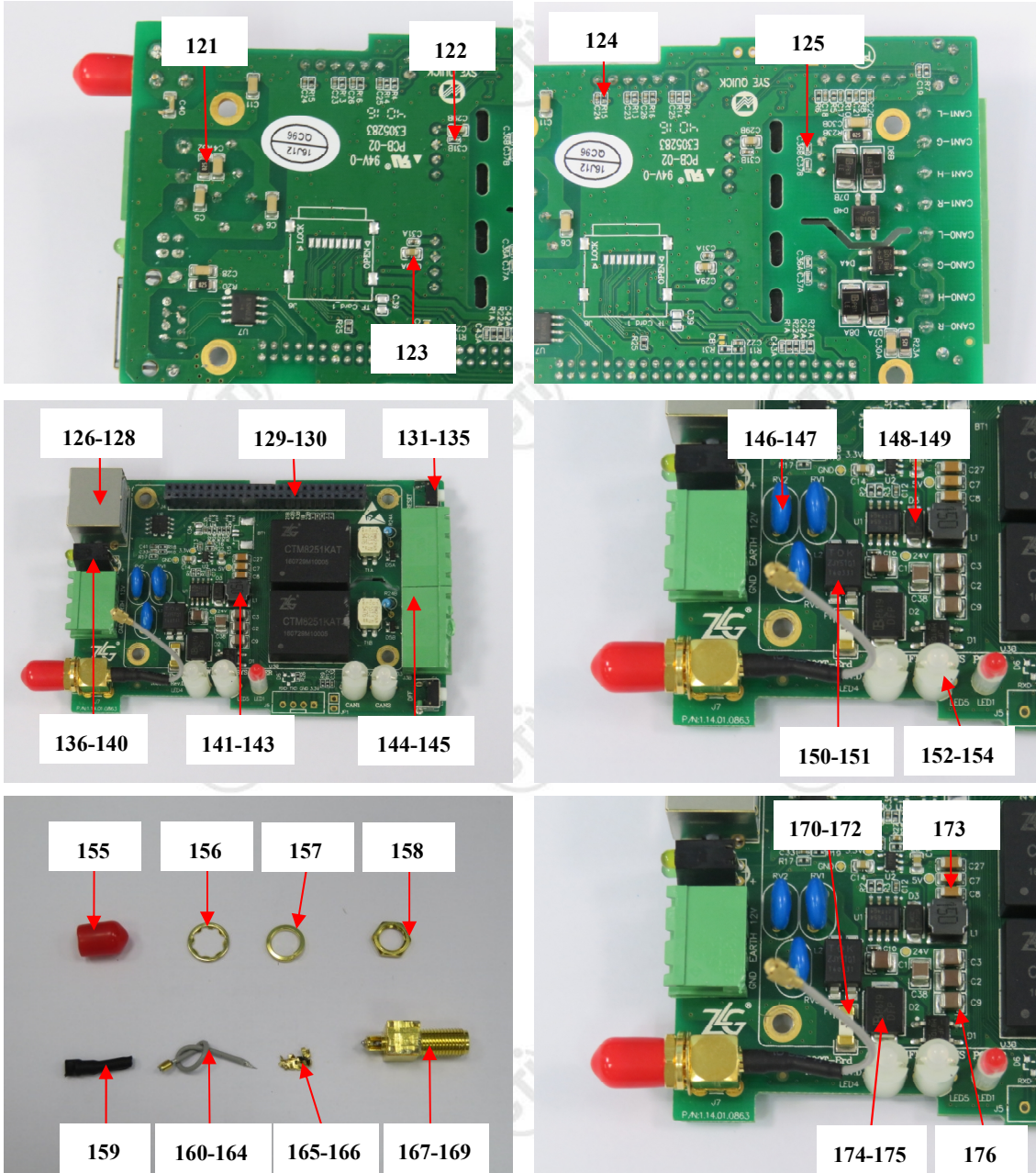


Verification Report

Report No. SCL01J022437

Page 91 of 99

Photo(s) of the tested component(s)

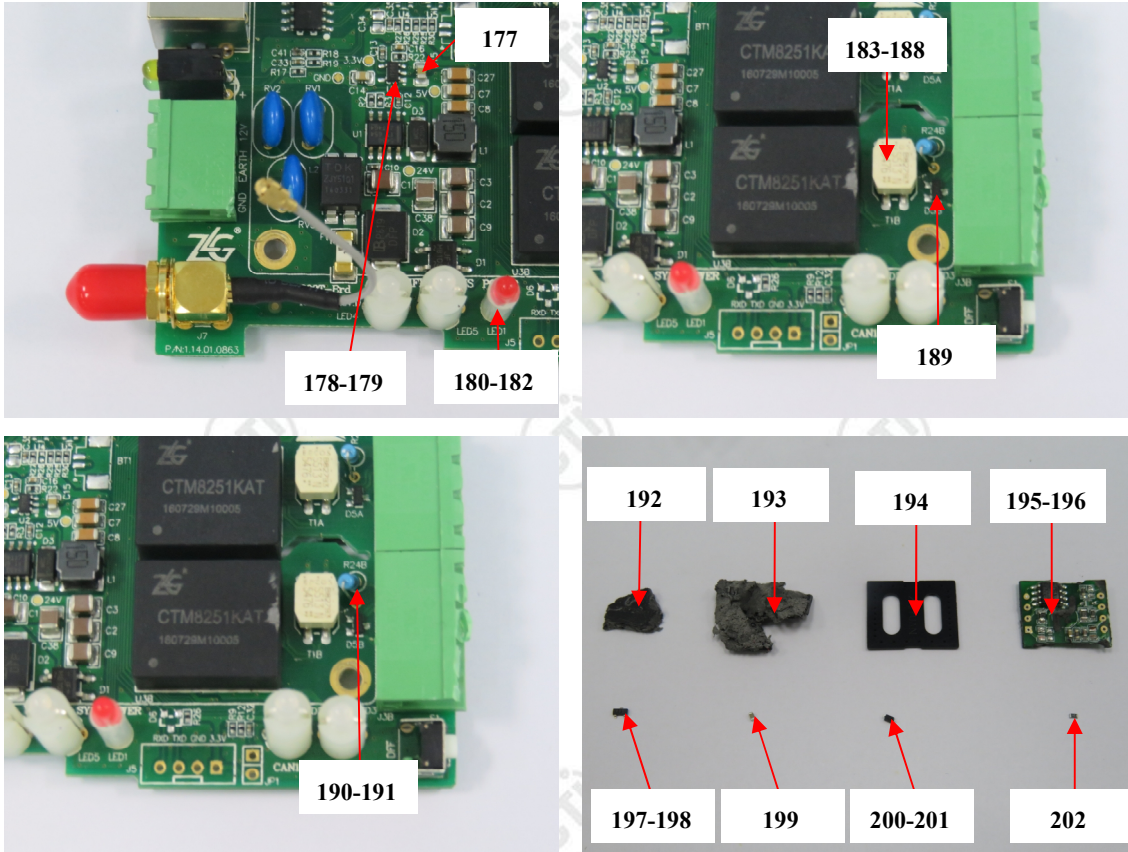


Verification Report

Report No. SCL01J022437

Page 92 of 99

Photo(s) of the tested component(s)

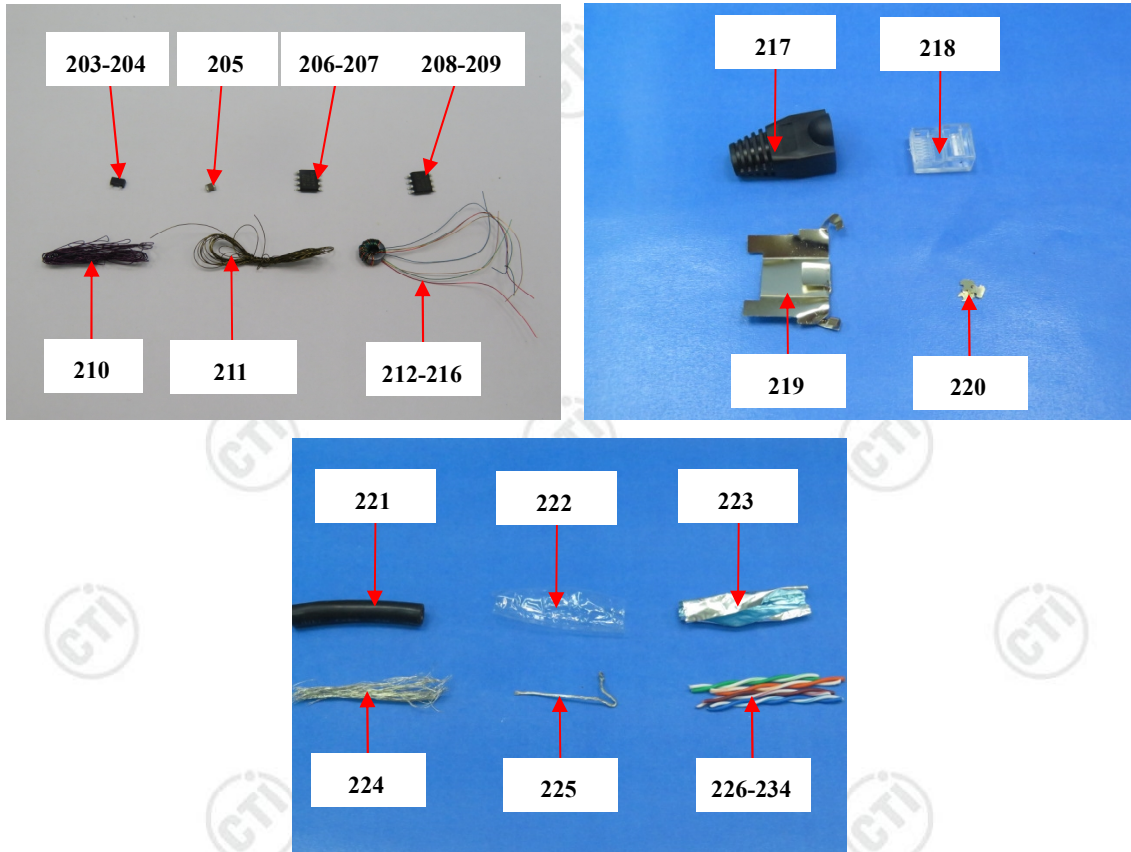


Verification Report

Report No. SCL01J022437

Page 93 of 99

Photo(s) of the tested component(s)



Verification Report

Report No. SCL01J022437

Page 94 of 99

Exempted Items of RoHS Directive

In accordance with Directive 2011/65/EU as amended, there are 41 exemption items in Annex III of 2011/65/EU altogether.

	Exemption	Scope and dates of applicability
1	Mercury in single capped (compact) fluorescent lamps not exceeding (per burner):	
1(a)	For general lighting purposes < 30 W: 5 mg	Expires on 31 December 2011; 3,5 mg may be used per burner after 31 December 2011 until 31 December 2012; 2,5 mg shall be used per burner after 31 December 2012.
1(b)	For general lighting purposes \geq 30 W and < 50 W: 5 mg	Expires on 31 December 2011; 3,5 mg may be used per burner after 31 December 2011.
1(c)	For general lighting purposes \geq 50 W and < 150 W: 5 mg	
1(d)	For general lighting purposes \geq 150 W: 15 mg	
1(e)	For general lighting purposes with circular or square structural shape and tube diameter \leq 17 mm	No limitation of use until 31 December 2011; 7 mg may be used per burner after 31 December 2011.
1(f)	For special purposes: 5 mg	
1(g)	For general lighting purposes < 30 W with a lifetime equal or above 20 000 h: 3,5 mg	Expires on 31 December 2017.
2(a)	Mercury in double-capped linear fluorescent lamps for general lighting purposes not exceeding (per lamp):	
2(a)(1)	Tri-band phosphor with normal lifetime and a tube diameter < 9 mm (e.g. T2): 5 mg	Expires on 31 December 2011; 4 mg may be used per lamp after 31 December 2011.
2(a)(2)	Tri-band phosphor with normal lifetime and a tube diameter \geq 9 mm and \leq 17 mm (e.g. T5): 5 mg	Expires on 31 December 2011; 3 mg may be used per lamp after 31 December 2011.
2(a)(3)	Tri-band phosphor with normal lifetime and a tube diameter > 17 mm and \leq 28 mm (e.g. T8): 5 mg	Expires on 31 December 2011; 3,5 mg may be used per lamp after 31 December 2011.
2(a)(4)	Tri-band phosphor with normal lifetime and a tube diameter > 28 mm (e.g. T12): 5 mg	Expires on 31 December 2012; 3,5 mg may be used per lamp after 31 December 2012.
2(a)(5)	Tri-band phosphor with long lifetime (\geq 25 000 h): 8 mg	Expires on 31 December 2011; 5 mg may be used per lamp after 31 December 2011.
2(b)	Mercury in other fluorescent lamps not exceeding (per lamp):	
2(b)(1)	Linear halophosphate lamps with tube > 28 mm (e.g. T10 and T12): 10 mg	Expires on 13 April 2012.
2(b)(2)	Non-linear halophosphate lamps (all diameters): 15 mg	Expires on 13 April 2016.

Verification Report

Report No. SCL01J022437

Page 95 of 99

2(b)(3)	Non-linear tri-band phosphor lamps with tube diameter > 17 mm (e.g. T9)	No limitation of use until 31 December 2011; 15 mg may be used per lamp after 31 December 2011.
2(b)(4)	Lamps for other general lighting and special purposes (e.g. induction lamps).	No limitation of use until 31 December 2011; 15 mg may be used per lamp after 31 December 2011.
3	Mercury in cold cathode fluorescent lamps and external electrode fluorescent lamps (CCFL and EEFL) for special purposes not exceeding (per lamp):	
3(a)	Short length (≤ 500 mm)	No limitation of use until 31 December 2011; 3,5 mg may be used per lamp after 31 December 2011.
3(b)	Medium length (> 500 mm and $\leq 1\ 500$ mm)	No limitation of use until 31 December 2011; 5 mg may be used per lamp after 31 December 2011.
3(c)	Long length (> 1500 mm)	No limitation of use until 31 December 2011; 13 mg may be used per lamp after 31 December 2011.
4(a)	Mercury in other low pressure discharge lamps (per lamp).	No limitation of use until 31 December 2011; 15 mg may be used per lamp after 31 December 2011.
4(b)	Mercury in High Pressure Sodium (vapour) lamps for general lighting purposes not exceeding (per burner) in lamps with improved colour rendering index $R_a > 60$:	
4(b)-I	$P \leq 155$ W	No limitation of use until 31 December 2011; 30 mg may be used per burner after 31 December 2011.
4(b)-II	155 W $< P \leq 405$ W	No limitation of use until 31 December 2011; 40 mg may be used per burner after 31 December 2011.
4(b)-III	$P > 405$ W	No limitation of use until 31 December 2011; 40 mg may be used per burner after 31 December 2011.
4(c)	Mercury in other High Pressure Sodium (vapour) lamps for general lighting purposes not exceeding (per burner):	
4(c)-I	$P \leq 155$ W	No limitation of use until 31 December 2011; 25 mg may be used per burner after 31 December 2011.
4(c)-II	155 W $< P \leq 405$ W	No limitation of use until 31 December 2011; 30 mg may be used per burner after 31 December 2011.
4(c)-III	$P > 405$ W	No limitation of use until 31 December 2011; 40 mg may be used per burner after 31 December 2011.
4(d)	Mercury in High Pressure Mercury (vapour) lamps (HPMV).	Expires on 13 April 2015.
4(e)	Mercury in metal halide lamps (MH)	

Verification Report

Report No. SCL01J022437

Page 96 of 99

4(f)	Mercury in other discharge lamps for special purposes not specifically mentioned in this Annex.	
4(g)	Mercury in hand crafted luminous discharge tubes used for signs, decorative or architectural and specialist lighting and light-artwork, where the mercury content shall be limited as follows: (a) 20 mg per electrode pair + 0,3 mg per tube length in cm ,but not more than 80 mg, for outdoor applications and indoor applications exposed to temperatures below 20°C; (b) 15 mg per electrode pair + 0,24 mg per tube length in cm, but not more than 80 mg, for all other indoor applications.	Expires on 31 December 2018.
5(a)	Lead in glass of cathode ray tubes.	
5(b)	Lead in glass of fluorescent tubes not exceeding 0,2 % by weight.	
6(a)	Lead as an alloying element in steel for machining purposes and in galvanized steel containing up to 0,35 % lead by weight.	
6(b)	Lead as an alloying element in aluminium containing up to 0,4 % lead by weight.	
6(c)	Copper alloy containing up to 4% lead by weight.	
7(a)	Lead in high melting temperature type solders (i.e. lead- based alloys containing 85 % by weight or more lead).	
7(b)	Lead in solders for servers, storage and storage array systems, network infrastructure equipment for switching, signalling, transmission, and network management for telecommunications.	
7(c)-I	Electrical and electronic components containing lead in a glass or ceramic other than dielectric ceramic in capacitors, e.g. piezoelectronic devices, or in a glass or ceramic matrix compound.	
7(c)-II	Lead in dielectric ceramic in capacitors for a rated voltage of 125 V AC or 250 V DC or higher.	
7(c)-III	Lead in dielectric ceramic in capacitors for a rated voltage of less than 125 V AC or 250 V DC.	Expires on 1 January 2013 and after that date may be used in spare parts for EEE placed on the market before 1 January 2013.

Verification Report

Report No. SCL01J022437

Page 97 of 99

7(c)-IV	Lead in PZT based dielectric ceramic materials for capacitors being part of integrated circuits or discrete semiconductors.	
8(a)	Cadmium and its compounds in one shot pellet type thermal cut-offs.	Expires on 1 January 2012 and after that date may be used in spare parts for EEE placed on the market before 1 January 2012.
8(b)	Cadmium and its compounds in electrical contacts.	
9	Hexavalent chromium as an anticorrosion agent of the carbon steel cooling system in absorption refrigerators up to 0,75 % by weight in the cooling solution.	
9(b)	Lead in bearing shells and bushes for refrigerant-containing compressors for heating, ventilation, air conditioning and refrigeration (HVACR) applications.	
11(a)	Lead used in C-press compliant pin connector systems.	May be used in spare parts for EEE placed on the market before 24 September 2010.
11(b)	Lead used in other than C-press compliant pin connector systems.	Expires on 1 January 2013 and after that date may be used in spare parts for EEE placed on the market before 1 January 2013.
12	Lead as a coating material for the thermal conduction module C-ring.	May be used in spare parts for EEE placed on the market before 24 September 2010.
13(a)	Lead in white glasses used for optical applications.	
13(b)	Cadmium and lead in filter glasses and glasses used for reflectance standards.	
14	Lead in solders consisting of more than two elements for the connection between the pins and the package of microprocessors with a lead content of more than 80 % and less than 85 % by weight.	Expires on 1 January 2011 and after that date may be used in spare parts for EEE placed on the market before 1 January 2011.
15	Lead in solders to complete a viable electrical connection between semiconductor die and carrier within integrated circuit flip chip packages.	
16	Lead in linear incandescent lamps with silicate coated tubes.	Expires on 1 September 2013.
17	Lead halide as radiant agent in high intensity discharge (HID) lamps used for professional reprography applications.	

Verification Report

Report No. SCL01J022437

Page 98 of 99

18(a)	Lead as activator in the fluorescent powder (1 % lead by weight or less) of discharge lamps when used as speciality lamps for diazoprinting reprography, lithography, insect traps, photochemical and curing processes containing phosphors such as SMS ((Sr,Ba) ₂ MgSi ₂ O ₇ :Pb).	Expires on 1 January 2011.
18(b)	Lead as activator in the fluorescent powder (1 % lead by weight or less) of discharge lamps when used as sun tanning lamps containing phosphors such as BSP (BaSi ₂ O ₅ :Pb).	
19	Lead with PbBiSn-Hg and PbInSn-Hg in specific compositions as main amalgam and with PbSn-Hg as auxiliary amalgam in very compact energy saving lamps (ESL).	Expires on 1 June 2011.
20	Lead oxide in glass used for bonding front and rear substrates of flat fluorescent lamps used for Liquid Crystal Displays (LCDs).	Expires on 1 June 2011.
21	Lead and cadmium in printing inks for the application of enamels on glasses, such as borosilicate and soda lime glasses.	
23	Lead in finishes of fine pitch components other than connectors with a pitch of 0, 65 mm and less.	May be used in spare parts for EEE placed on the market before 24 September 2010.
24	Lead in solders for the soldering to machined through hole discoidal and planar array ceramic multilayer capacitors.	
25	Lead oxide in surface conduction electron emitter displays (SED) used in structural elements, notably in the seal frit and frit ring.	
26	Lead oxide in the glass envelope of black light blue lamps.	Expires on 1 June 2011.
27	Lead alloys as solder for transducers used in high-powered (designated to operate for several hours at acoustic power levels of 125 dB SPL and above) loudspeakers.	Expired on 24 September 2010.
29	Lead bound in crystal glass as defined in Annex I (Categories 1, 2, 3 and 4) of Council Directive 69/493/EEC.	
30	Cadmium alloys as electrical/mechanical solder joints to electrical conductors located directly on the voice coil in transducers used in high-powered loudspeakers with sound pressure levels of 100 dB (A) and more.	
31	Lead in soldering materials in mercury free flat fluorescent lamps (which e.g. are used for liquid crystal displays, design or industrial lighting).	

Verification Report

Report No. SCL01J022437

Page 99 of 99

32	Lead oxide in seal frit used for making window assemblies for Argon and Krypton laser tubes.	
33	Lead in solders for the soldering of thin copper wires of 100 µm diameter and less in power transformers.	
34	Lead in cermet-based trimmer potentiometer elements.	
36	Mercury used as a cathode sputtering inhibitor in DC plasma displays with a content up to 30 mg per display.	Expired on 1 July 2010.
37	Lead in the plating layer of high voltage diodes on the basis of a zinc borate glass body.	
38	Cadmium and cadmium oxide in thick film pastes used on aluminium bonded beryllium oxide.	
39	Cadmium in colour converting II-VI LEDs (< 10 µg Cd per mm ² of light-emitting area) for use in solid state illumination or display systems.	Expires on 1 July 2014.
40	Cadmium in photoresistors for analogue optocouplers applied in professional audio equipment.	Expires on 31 December 2013.
41	Lead in solders and termination finishes of electrical and electronic components and finishes of printed circuit boards used in ignition modules and other electrical and electronic engine control systems, which for technical reasons must be mounted directly on or in the crankcase or cylinder of hand-held combustion engines (classes SH:1, SH:2, SH:3 of Directive 97/68/EC of the European Parliament and of the Council.	Expires on 31 December 2018.

*** End of Report ***

The test report is effective only with both signature and specialized stamp. The result(s) shown in this report refer only to the sample(s) tested. Without written approval of CTI, this report can't be reproduced except in full.